



OPERATING INSTRUCTIONS

5 in 1 Wireless Headphones



MODEL: A5251

thank you

Thank you for the purchase of this quality **LLOYTRON** product. Used carefully and in accordance with the instructions enclosed, it should give you trouble free service over a long period of time. Please keep these instructions for future reference.

FEATURES

- Use with TV, DVD, Radio, MP3 player, PC, CD Players, etc.
- Maximum Range 8m (26ft) unobstructed.
- Includes autoscan FM radio
- Lightweight and padded design for comfort use
- Includes cable for use as wired headphones, if required.
- Requires 4xAAA batteries (not included)



SPECIFICATIONS

Transmitter

Emission frequency: 88 +/-0.5MHz

Modulation mode: FM

Emission distance: 8M (with no interference)

Power supply: 2xAAA batteries or 4.5V DC
(Not Included).

Receiver(Headphone)

Frequency range: 86 -108MHz

Reception Mode: FM

Distortion: >=2%

Power Supply 2xAAA batteries (Not Included)



IMPORTANT SAFEGUARDS AND PRECAUTIONS



SAVE THESE INSTRUCTIONS

- Read all instructions carefully.
- For Household Use only.
- Only for use indoors.
- Do not use outside or in damp conditions.
- Keep away from hot surfaces, such as gas or electric hobs and ovens etc.
- Do not use for any purposes other than the appliances intended use.
- Do not use if any part of this appliance is damaged in any way.
- To prevent against the risk of electric shock, do not submerge any part of this appliance in water, unless advised in this manual.
- This appliance should only be used on a flat surface.



- To prevent possible hearing damage, do not listen at high volume levels for long periods.

- This appliance is not intended for use by persons with reduced physical, sensory or mental capabilities, or lack of experience and knowledge, unless they have been given supervision or instruction concerning use of the appliance, by a person responsible for their safety.
- Children should be supervised to ensure they do not play with this appliance.
- Cleaning and user maintenance shall not be made by children.
- Never let children push anything into holes or slots in the cabinet or casing – this could result in an electric shock.
- Always unplug when not in use.
- Do not use rechargeable batteries in this appliance.
- Do not mix old and new batteries, different types of batteries, alkaline or rechargeable batteries with different capacity together – they may leak.
- Always turn the unit off, when not in use. Leaving it on will shorten the life of the batteries.
- If you plan not to use the unit for a length of time, remove the batteries. Old batteries can leak and cause corrosion, damaging the unit.
- Should you find the sensitivity or quality of sound deteriorating, replace all old batteries with new ones as soon as possible.
- The use of long life alkaline batteries is recommended.
- DON'T throw the battery in fire or dispose of in household waste. Consult your local authority in the correct way to dispose of unwanted batteries.
- DON'T short-circuit the supply terminals of the batteries.
- Always check the correct polarity when inserting batteries. Incorrect polarity can damage this unit.

LOCATION OF CONTROLS

A Receiver

1. Battery compartment cover
2. Volume control
3. Scan key(SCAN)
4. Reset key(RESET)
5. Power Indicator
6. Audio socket

B Transmitter

7. Power indicator (Front)
8. Power switch
9. Microphone socket (MIC)
10. Power socket (4.5V DC)
11. Microphone (MIC)
12. Audio cable of transmitter
13. Battery compartment (bottom)



OPERATION

Notes

To achieve best reception unwind fully the transmitter audio cable and/or locate the transmitter in a high position.(the transmitter audio cable can also be used as antenna).

If the sound is distorted or too strong, adjust the volume of the signal source (TV set, VCD player, DVD player, PC, MP3 walkman etc.) to a lower level, and reception performance may be improved.

Put TV on mute or quite mode so you can listen to TV without disturbing any one.

Replace the batteries if having the following problems

The transmitter indicator becomes dim.

The receiver reception is poor.

The volume becomes weak and the sound is distorted.

Installing the Receiver

Insert two “AAA batteries” into the battery compartment according to the + and - polarity. Move the function switch to the ON. Move the function switch to the location of WIRELESS or FM. The indicator will illuminate to ensure that the headphone is work well.

Installing the Transmitter

Insert two “AAA batteries” into the battery compartment according to the + and - polarity, or insert the power adaptor (optional) into power socket of transmitter (4.5V DC not supplied).

Insert audio plug of the transmitter into AUDIO-OUT socket of audio source (such as TV set audio device PC DVD player CD player MP3 player etc.). Please see diagram.

Note: put the transmitter at a high position in order to achieve the best reception.

5in1 Operation Wireless Headphone

1. Please see Fig.1, Insert the transmitter audio cable into the AUDIO-OUT socket of the electronic device or headphone socket.
2. Move the function switch of the transmitter to the “WIRELESS” position, then the transmitter indicator will illuminate.
3. Rotate the On/Off switch on the headphone and the indicator will illuminate. Put the volume control to a desired position. First press “RESET” and then press the “SCAN” key. You can now hear the music from the transmitter.

Wireless Web Chat

1. Connect the transmitter audio cable to the adaptor cable (optional) (see Fig.2), and insert one end of the adaptor cable into the audio out socket of the PC, then insert the other end of the audio cable into the microphone socket (MIC)on the transmitter, and insert the other end into the microphone in socket of the PC.
2. Select “AUDIO-CHAT” on the transmitter, the indicator will illuminate.
3. Aim the microphone towards you and keep away distance of 0.5M from the Mic to avoid interference.
4. Open your chat tool.
5. Rotate the On/Off switch on the headphone and the indicator will illuminate. Put the volume control to a desired position. First press “RESET” and then press the “SCAN” key. You can now hear the transmitter, and can receive the sound via the SKYPE/MSN/QQ from your friends in the other end.

Listen to Radio

1. Select "FM" on the Transmitter.
2. Rotate the On/Off switch on the headphone and the indicator will illuminate. Put the volume control to a desired position.
3. Press "SCAN" and the FM Waveband will begin to search for a radio station. When found it will stop and press "SCAN" again to choose another station.
4. When the maximum waveband frequency has been reached you will need to press "RESET" button to start the search from the beginning.
5. Press "SCAN" key again, and the receiver will re-search the waveband from the low range again until your desired channel has been found.

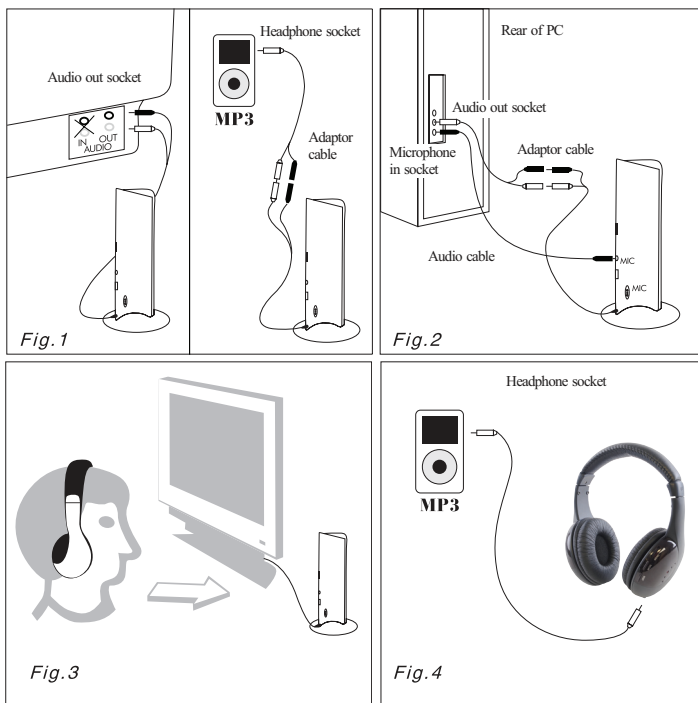
Wired Headphones

1. Select "OFF" on the Transmitter, since this is not required.
2. Insert one end of the audio cable (optional) into the audio socket of the receiver (see Fig.4), and insert the other end into the headphone socket of the electronic device, such as MP3 player VCD player DVD player etc
3. The unit can now be used as a wired stereo headphone.

Note: Batteries are not needed in the Headphones when used by wire.

Room Monitor

1. Select "MONITOR" on the transmitter, the indicator will illuminate.
2. Keep the Built-In Microphone at least 0.5m distance away from the Headphone to avoid interference.
3. Rotate the On/Off switch on the headphone and the indicator will illuminate. Put the volume control to a desired position. First press "RESET" and then press the "SCAN" key. You can now hear the noise in the room from the transmitter.



CLEANING AND CARE

MAINTENANCE:

This appliance has been designed to operate over a long period of time with a minimum of maintenance. Continuous satisfactory operation depends upon proper care and regular cleaning.

CLEANING:

The exterior surface of the appliance should be wiped with a clean dry cloth only.

DO NOT USE ABRASIVE CLEANERS, SOLVENTS OR POLISH ON ANY PART OF THIS APPLIANCE.

WEEE/ENVIRONMENTAL PROTECTION



Disposal of Electrical and Electronic Equipment

Do not dispose of this product with household waste. For the proper treatment, recovery and recycling please take this product to the appropriate waste collection point. If you are unsure where this may be, please contact your local authority. Improper disposal may be harmful to the environment.



LLOYTRON® CUSTOMER SERVICES

If you have any queries about this product, there are three ways to contact our customer service department:

call: 08454 81 8808

email: customerservice@lloytron.com

web: www.lloytronhelpdesk.com

To find more details on a wide range of Lloytron products please visit our website at **www.lloytron.com**
Lloytron plc, Laltex House, Leigh Commerce Park, Greenfold Way, Leigh, Lancashire, WN7 3XH. England, U.K