

 **LLOYTRON[®]**

OPERATING INSTRUCTIONS

Compact Multi-Chopper



MODEL: E5414

thank you

Thank you for the purchase of this quality **LLOYTRON** product. Used carefully and in accordance with the instructions enclosed, it should give you trouble free service over a long period of time. Please keep these instructions for future reference.

FEATURES

- Power: 250w max.
- Food capacity: 280g
- Liquid capacity: 1ltr
- Transparent glass bowl
- Safety cut out switch
- Single speed
- Stainless steel chopping blades



SPECIFICATIONS

Operating Voltage: 220-240v ~ 50Hz

Wattage: 250w

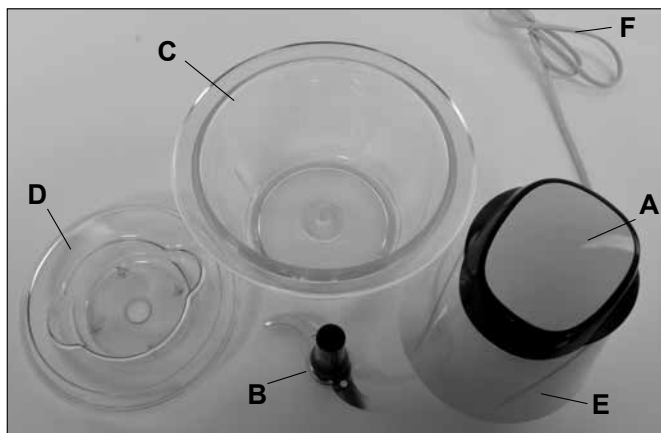
IMPORTANT SAFEGUARDS AND PRECAUTIONS

- Save these instructions.
- Read all instructions carefully
- For Household Use only. Not intended for commercial use.
- Only for use indoors.
- Do not use outside or in damp conditions.
- Before plugging into mains socket, check whether supply line voltage and current rating are in compliance with the rated electrical parameters shown on the rating label.
- Keep away from hot surfaces, such as gas or electric hobs and ovens etc
- Do not use for any purposes other than the appliances intended use.
- This appliance is not intended to be operated by means of an external timer or separate remote control system.
- To prevent damage to the mains cord, do not let it pass over sharp corners, edges or hot surfaces.
- If the supply cord is damaged, do not use. Check before each use!
- The supply cord cannot be replaced. If the cord is damaged the appliance should be scrapped.
- Do not use if any part of this appliance is damaged in any way.
- Always unplug when not in use.
- To prevent against the risk of electric shock, do not submerge any part of this appliance in water, unless advised in this manual.
- This appliance should only be used on a flat surface.

- This appliance can be used by children aged from 8 years and above and persons with reduced physical, sensory or mental capabilities or lack of experience and knowledge if they have been given supervision or instruction concerning use of the appliance in a safe way and understand the hazards involved.
- Children shall not play with this appliance.
- Cleaning and user maintenance shall not be made by children without supervision.

- Always disconnect the appliance from the supply if it is left unattended and before assembling, disassembling or cleaning.
- Blades are very sharp, even when not in use. Caution should be taken when cleaning or handling blades.
- Ensure correct assembly of all parts before use.
- Blades should be checked regularly for any damage or cracks.
- Do not use when empty or below the minimum mark.
- Do not operate in the presence of flammable fumes or mix flammable materials.
- Do not allow children to use this appliance without supervision.

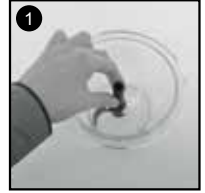
PARTS DESCRIPTION



- A - On/Off Switch
- B - Stainless Steel Blade
- C - Transparent Glass Bowl
- D - Plastic Bowl Cover/
Motor Unit Support Fixture
- E - Motor Unit
- F - Power Cord

ASSEMBLY

- 1** Ensure that **Part C** is placed **upright** and **fit Part B** onto the protruding nipple in the centre of the bowl. **Proceed** to fill the bowl with any food or liquid that is required.



- 2** Take **Part D** and **cover** the top of the enclosure on **Part C**, being sure that the plastic spindle on **Part B** is protruding up through the hole in the centre of **Part D**. Also, **be sure** to check **Part D** is the correct way up as shown. **Part D** will fit securely into the enclosure.



- 3** Take **Part E** and **fit** it into grooves on **Part D**. **Part E** should slot securely into place.



- 4** Take **Part F** and **insert** it into the mains socket on the wall.

OPERATION

Before first use, wash the bowl in warm water, rinse and dry well. Chopping is a very fast process. The motor drives the blades at a high speed to ensure that thorough chopping is achieved. Make sure that whenever you use your mini chopper it is standing on a flat, clean and dry surface. Before chopping, please make sure that all parts are correctly assembled.

- 1** Once the assembly stages have been completed, **press down** on the On/Off switch to operate the motor.

- 2** After use, **unplug** the appliance and wait for the blades to stop spinning **completely**.

Note: Do Not operate continuously for more than 1 minute at a time. Allow time to cool between each use. Ensure both the Bowl and the Lid are locked securely into place otherwise the unit will not operate. The operation can be carried out 3 times with short intervals. After the third time, allow a rest period of 15 minutes.

CHOPPING/MIXING RECOMMENDATIONS

FOOD	MAXIMUM QUANTITY	MAXIMUM TIME
Almonds	100g	15 Secs
Boiled Eggs	200g	10 Secs
Breadcrumbs	20g	15 Secs
Garlic	150g	Pulse
Gruyere	100g	15 Secs
Ham	200g	15 Secs
Hazlenuts	100g	15 Secs
Ice Cream	200g	20 Secs
Ice Cubes	4-5 Small Ice Cubes	Pulse
Light Batter	0.4L	15 Secs
Onions	200g	Pulse
Parsley	30g	10 Secs
Pepper	0.2L	30 Secs
Shallots	200g	Pulse
Spice	0.2L	30 Secs
Soup	0.4L	30 Secs
Steak	150-200g	15 Secs
Wallnuts	100g	15 Secs

CLEANING AND CARE

Important: Never put the appliance under a tap or in a dishwasher but clean it with a damp sponge. Handle the blades carefully when cleaning. The blades are extremely sharp.

- **Unplug** the appliance.
 - **Disassemble** the Appliance by **removing** Parts F, E and C.
 - **Rinse** Parts E, D and C under running water.
 - **Leave** all parts to **dry naturally**
 - **Wipe clean** part F with a damp sponge or cloth. NEVER IMMERSE IN WATER.
- NOTE: THIS ITEM IS NOT DISHWASHER SAFE

TIPS TO PROLONG THE LIFE OF YOUR MINI CHOPPER

- 1. Make sure** there is something in the Bowl each time you use the unit. The chopper bearings may be damaged if run on a “No-load” basis.
- 2. Cut** cooked meats into one-centimetre **cubes** before adding into the Bowl.
- 3. Remember** that a Mini Chopper **cannot** process raw meat.
- 4. Ensure** that the food being chopped is not too thick or heavy for the motor to handle. If it seems to be having difficulty, **turn off, remove** the lid and **add** a little liquid or **scrape** the mixture down towards the Blades with a soft rubber spatula.
- 5. Do not** use the Bowl for storing foods or beverages

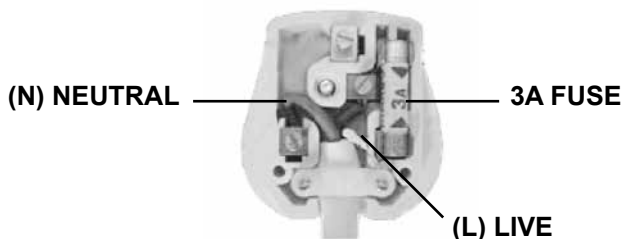
WEEE/ENVIRONMENTAL PROTECTION



Disposal of Electrical and Electronic Equipment

Do not dispose of this product with household waste. For the proper treatment, recovery and recycling please take this product to the appropriate waste collection point. If you are unsure where this may be, please contact your local authority. Improper disposal may be harmful to the environment.

UK PLUG REWIRING



Your appliance operates on 220-240V~50Hz AC Mains and comes fitted with a 3-pin BSI Approved plug, so that it is ready for use by simply plugging into AC Mains. Should you need to change or refit a plug, proceed as follows: -

IMPORTANT:

The wires in the mains lead are coloured in accordance with the following code:

BLUE: NEUTRAL (N)

BROWN: LIVE (L)

As the colours of the wires in the mains lead of this appliance may not correspond with the coloured markings identifying the terminals in your plug, proceed as follows:

The BLUE wire must be connected to the terminal which is marked with the letter "N" or coloured BLACK.

The BROWN wire must be connected to the terminal which is marked with the letter "L" or coloured RED.

DO NOT CONNECT EITHER WIRE TO THE EARTH TERMINAL OF A 3-PIN PLUG

Always ensure that the Mains Cord is located into the Plug through the Cord Guard or Cable Clamp, and that the Cord Guard screws are tightened to clamp the Cord (outer sheath and inner coloured wires) in position in the Plug. Make sure the Plug top is also fitted securely.

The supply cord cannot be replaced. If the supply cord is damaged, the appliance should be scrapped.

This appliance must be protected by a 3 Amp fuse in a 13 Amp type (BS1363) plug. Should you need to replace the fuse, use only an ASTA approved BS1362 fuse.



LLOYTRON® CUSTOMER SERVICES

If you have any queries about this product, there are three ways to contact our customer service department:

call: 08454 81 8808

email: customerservice@lloytron.com

web: www.lloytronhelpdesk.com

To find more details on a wide range of Lloytron products please visit our website at www.lloytron.com
Lloytron plc, Laltex House, Leigh Commerce Park, Greenfold Way, Leigh, Lancashire, WN7 3XH. England, U.K