
OPERATING INSTRUCTIONS

Electric Clothes Dryer



MODEL: E9701

thank you

Thank you for the purchase of this quality **HOMELIFE** product. Used carefully and in accordance with the instructions enclosed, it should give you trouble free service over a long period of time. Please keep these instructions for future reference.

FEATURES

- 230w Power
- 20x Aluminium Heating Bars
- Heated Fold-out Wings
- 5min to heat to 50C
- Lightweight
- Size: 147 x 54 x 93cm
- Folded Size: 96 x 54 x 5.4cm
- Cord Length: 1.4m
- IPX1
- Low running costs of 5p* per hour

*based on electricity costs of 22p per kWh



TECHNICAL SPECIFICATIONS

Rated Input:	220-240V ~ 50-60Hz 230W
Max Centre Weight:	10Kg
Max Wing Weight:	2.5Kg each
Cable Length:	1.4m approximately
Dimensions:	147 x 54 x 93cm (approx.)
IP Degree:	IP X1
Operating Temperature:	+5C to +25C

Note: Do not operate if ambient temperature is outside this range as this may damage the product.

IMPORTANT SAFEGUARDS AND PRECAUTIONS

SAVE THESE INSTRUCTIONS

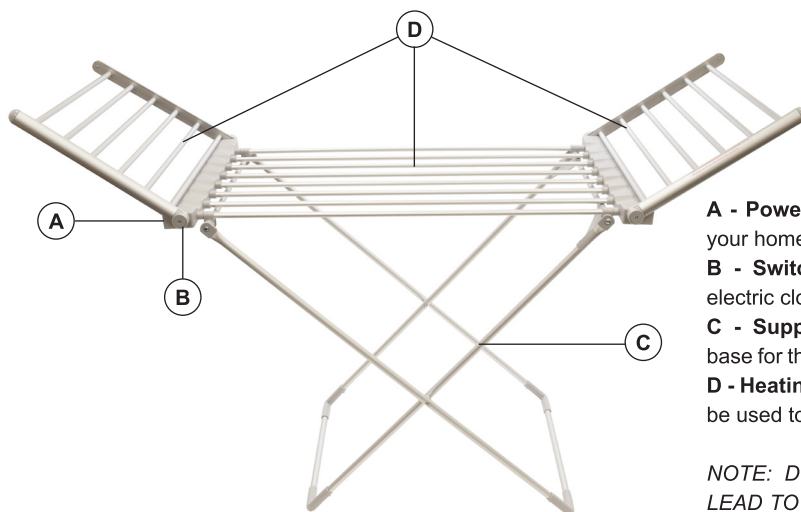
- Read all instructions carefully
- For Household Use only. Not intended for commercial use.
- Only for use indoors.
- Before plugging into mains socket, check whether supply line voltage and current rating are in compliance with the rated electrical parameters shown on the rating label.
- To prevent damage to the mains cord, do not let it pass over sharp corners, edges or on the hot clothes dryer.
- To prevent against the risk of electric shock, do not submerge any part of this appliance in water, unless advised in this manual.
- If the cord is damaged, do not use. Check before each use!
- If the cord is damaged, it must be replaced by a special cord or assembly available from the manufacturer or its service agent.

- This appliance can be used by children aged from 8 years and above and persons with reduced physical, sensory or mental capabilities or lack of experience and knowledge if they have been given supervision or instruction concerning use of the appliance in a safe way and understand the hazards involved.
- Children shall not play with this appliance.
- Cleaning and user maintenance shall not be made by children without supervision.

DO NOT

- Do not unplug the device by the power cord, hold the plug, not the cord.
 - Do not use if the heated pipes are damaged.
 - Do not use in areas where gasoline, paint or flammable liquids are used or stored.
 - Do not use to dry down jackets and quilts!
-
- This appliance is intended for drying textiles washed in water.
 - Use this product strictly as described in this manual to avoid the cause of fire, electric shock or personal injury.
 - Always fold the wings out before switching the clothes dryer on.
 - After being on for 5 minutes, the heating region temperature remains constant at 45-55 Degrees Celsius. (which be affected by the environment)
 - Max load-bearing 2.5kg per wing, load-bearing 10kg middle part.

LOCATION OF CONTROLS



A - Power Cord: To connect to your home power supply

B - Switch Button: Turns the electric clothes dryer on and off

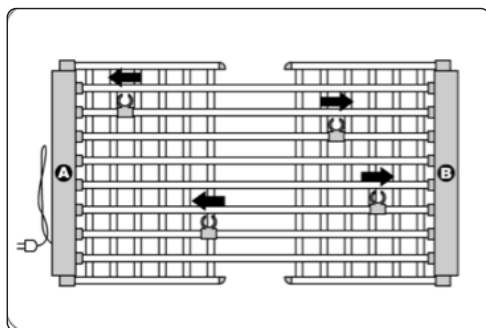
C - Support Legs: The stand base for the electric clothes dryer

D - Heating Region: The area to be used to dry clothes.

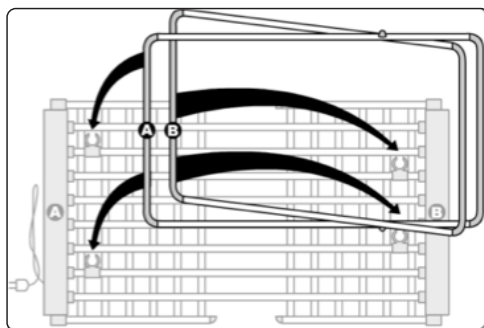
NOTE: DO NOT ALLOW THE LEAD TO BE PLACED ON THE HOT HEATING BARS

OPERATION

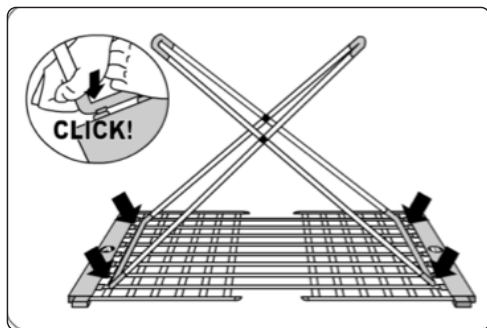
■ ASSEMBLY INSTUCTIONS



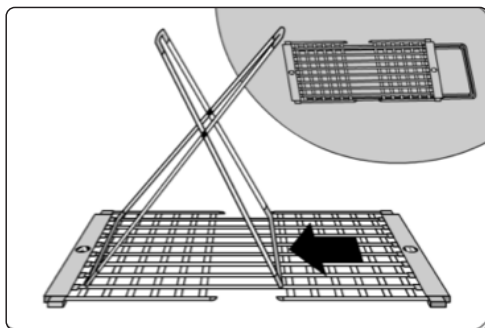
1. Lay the clothes dryer on a flat surface, with the hooks facing up. Move the outer latches to end A (near the switch) and the inner latches to end B.



2. Insert short bar "B" into zone "B" hooks and long bar "A" into zone "A" hooks.



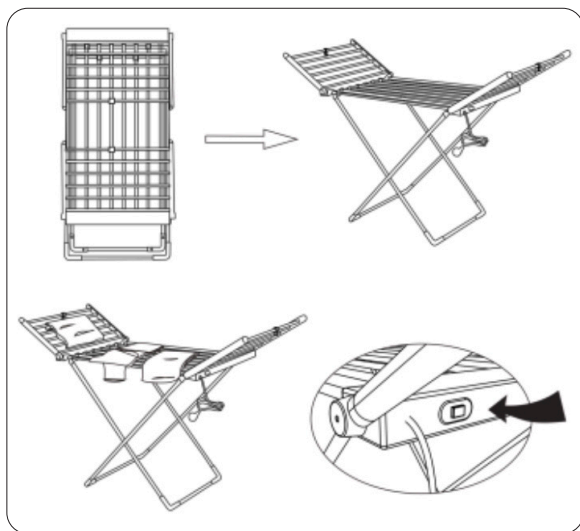
3. Firmly push each bar until it snaps firmly into its corresponding latch.



4. To fold the clothes dryer, gently push the short bar on side "B" (opposite the plug), until the clothesline is folded well.

■ USING THE CLOTHES DRYER

1. When using the electric clothes dryer, please refer to these safety instructions.
2. How to install and use as shown in the images below. After placing on a stable floor, turn on the switch button to activate the heater aier.
3. Once you have finished using the electric clothes dryer, unplug from the power source and fold the support legs & wings for easy storage.



■ USING THE CLOTHES DRYER

1. Press the switch at (I) position, the power indicator light up and this product start to work.
2. Press the switch at [o] position, the power indicator light off and this product finish working.

CLEANING AND CARE

WARNING

RISK OF INJURY AND DAMAGE!

Improper handling of the product may result in injury and damage to the product.

WARNING

RISK OF ELECTRIC SHOCK!

Improper handling of the product may result in an electric shock.

- Always unplug the mains plug from the mains socket and disconnect the connection plug from the connection socket before cleaning the product.
- Never immerse the plug, or the cord in water or other liquids.

Never clean the product with alcohol or solvent-based cleansers.

Please clean the surface by wet towel first and then dry it with a soft cotton cloth.

Please NOTE: Do not use a scouring pad or a rough cloth to wipe the product, it will scratch the surface of the product

STORAGE

This Clothes Dryer must be completely dry before being stored.

- Always let the product cool down completely before storing it.
- Always store the product in a dry area.
- Protect the product from direct sunlight.
- Store the product so that it is not accessible to children.
- Ensure both wings are folded to the correct storage position

Do not store the product at temperatures above or below 5°C - 23°C. Failure to comply could result in damage to the product.

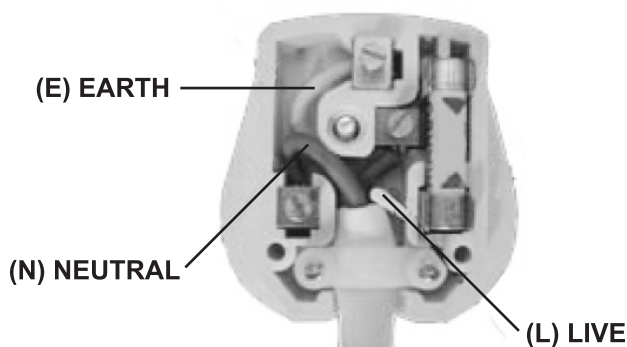
WEEE/ENVIRONMENTAL PROTECTION



DISPOSAL OF ELECTRICAL AND ELECTRONIC EQUIPMENT

Do not dispose of this product with household waste. For the proper treatment, recovery and recycling please take this product to the appropriate waste collection point. If you are unsure where this may be, please contact your local authority. Improper disposal may be harmful to the environment.

FITTING A NEW UK PLUG




Your appliance operates on 220-240V~50Hz AC Mains and comes fitted with a 3-pin BSI Approved plug, so that it is ready for use for the UK or Eire market. If for any reason you need to fit a new plug, the flexible mains lead must be connected as shown below: -

■ IMPORTANT:

The wires in the mains lead are coloured in accordance with the following code:

BLUE:	NEUTRAL (N)
BROWN:	LIVE (L)
GREEN AND YELLOW:	EARTH (E)

As the colours of the wires in the mains lead of this appliance may not correspond with the coloured markings identifying the terminals in your plug, proceed as follows:

The BLUE wire must be connected to the terminal which is marked with the letter "N" or coloured BLACK.
The BROWN wire must be connected to the terminal which is marked with the letter "L" or coloured RED.
The GREEN AND YELLOW wire must be connected to the terminal which is marked with the letter "E", the symbol  or coloured GREEN.

■ DO NOT CONNECT EITHER WIRE 'L' OR 'N' TO THE EARTH TERMINAL OF A 3-PIN PLUG

Always ensure that the Mains Cord is located into the Plug through the Cord Guard or Cable Clamp, and that the Cord Guard screws are tightened to clamp the Cord (outer sheath and inner coloured wires) in position in the Plug. Make sure the Plug top is also fitted securely.

The supply cord cannot be replaced. If the supply cord is damaged, the appliance should be scrapped.

This appliance must be protected by a 3 Amp fuse in a 13 Amp type (BS1363) plug. Should you need to replace the fuse, use only an ASTA approved BS1362 fuse.

FOR EASY LIVING
homelife® **CUSTOMER SERVICES**

If you have any queries about this product then please contact Lloytron Customer Services online at:



www.lloytronhelpdesk.com

To find out more about Homelife products, visit www.lloytron.com



Distributed in UK by Lloytron Ltd, Laltex House, Leigh, England. WN7 3XH
Distributed in Europe by Laltex Ireland Ltd, Dublin 2, Eire. D02 AY86