

# STAYCOOL™

---

OPERATING INSTRUCTIONS

---

## Dual 6" Clip/Desk Desk Fan



### BEFORE OPERATION

CHECK THAT THIS UNIT HAS NOT BEEN DAMAGED IN  
TRANSIT AND THAT THE FAN OPERATES. THINK SAFETY!

---

MODEL: F1005WH

---

# thank you

Thank you for the purchase of this quality **STAYCOOL** product. Used carefully and in accordance with the instructions enclosed, it should give you trouble free service over a long period of time. Please keep these instructions for future reference.

---

## FEATURES

---

- Radial safety grill
- Vertical tilt
- Two speed settings
- Quiet motor
- Diameter approx. 6" (15cm)
- Dual purpose desk or clip fan



---

## SPECIFICATIONS

---

Operating Voltage: 220-240v~50Hz

Power Consumption: 16w max.

---

## IMPORTANT SAFEGUARDS AND PRECAUTIONS

---

### READ AND SAVE THESE INSTRUCTIONS

- For Household Use only. Not intended for commercial use.
- Only for use indoors.
- Before plugging into mains socket, check whether supply line voltage and current rating are in compliance with the rated electrical parameters shown on the rating label.
- Keep away from hot surfaces, such as gas or electric hobs and ovens etc
- This appliance is not intended to be operated by means of an external timer or separate remote control system.



- To prevent damage to the mains cord, do not let it pass over sharp corners, edges or hot surfaces.
- If the supply cord is damaged, do not use. Check before each use!
- If the supply cord is damaged, it must be replaced by a special cord or assembly available from the manufacturer or its service agent.
- Always unplug when not in use.
- To prevent against the risk of electric shock, do not submerge any part of this appliance in water, unless advised in this manual.
- This appliance should only be used on a flat surface.
- Keep at least 50cm away from any wall or other objects, including people.
- Check the assembly is correct and robust.
- Avoid contact with moving parts. Do not insert any body parts (e.g. finger) or objects through the grill when the fan is operating.
- Be sure fan is on a stable surface when operating to avoid overturning.
- Always disconnect the fan when moving it from one location to another.
- Switch off and unplug from outlet when the product is not in use, before assembling or disassembling parts and before cleaning. Fully assemble the fan before switching on.

• This appliance can be used by children aged from 8 years and above and persons with reduced physical, sensory or mental capabilities or lack of experience and knowledge if they have been given supervision or instruction concerning use of the appliance in a safe way and understand the hazards involved.

- Children shall not play with this appliance.
- Cleaning and user maintenance shall not be made by children without supervision.



**WARNING!** Do not cover.

#### DO NOT

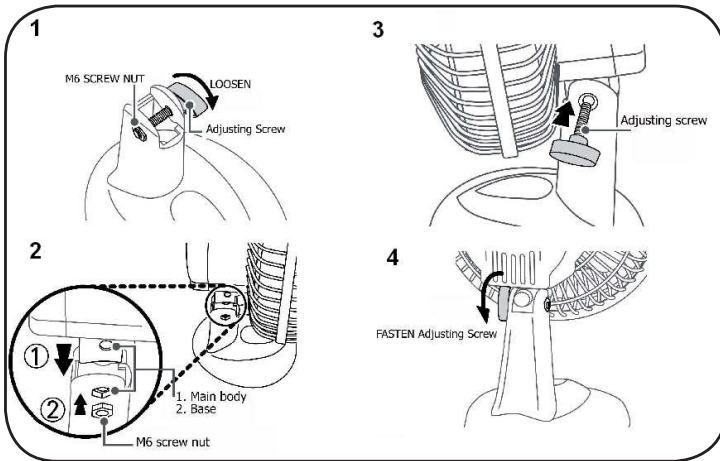
- Do not use outside or in damp conditions.
- Do not use for any purposes other than the appliances intended use.
- Do not use if any part of this appliance is damaged in any way.
- Do not use in bathrooms or in the vicinity of a bathtub, shower, or near a washbasin.
- Do not use near water.
- Do not use in vehicles.
- Do not operate in close proximity to curtains, etc.



# ASSEMBLY

## ■ CONNECT THE STAND

1. Loosen the Adjusting Screw by turning it anti-clockwise until it totally comes out of the M6 Screw Nut. (See Figure 1)
2. Place the extension under the motor unit into the slot of the Base. (See Figure 2)
3. Align the two connecting pieces such that their holes are in line.
4. Penetrate the Adjusting Screw through the holes of the two connecting pieces. (See Figure 3)
5. Fasten by turning the Adjusting Screw clockwise. (See Figure 4)



## ■ CONNECT THE CLIP

1. Loosen the Adjusting Screw by turning it anti-clockwise until it totally comes out of the M6 Screw Nut.
2. Place the extension under the motor unit into the slot of the clip.
3. Align the two connecting pieces such that their holes are in line.
4. Penetrate the Adjusting Screw through the holes of the two connecting pieces.
5. Fasten by turning the Adjusting Screw clockwise.

## ■ CLIPPING INSTRUCTIONS

\*\* The clip is designed to grip satisfactorily on flat objects between 10mm and 45mm thick the fan is not designed for clipping on to cylindrical or tubular objects.



---

# OPERATION

---

## ■ BEFORE FIRST USE

### ⚠ CAUTION

Select a suitable location for the fan. Always choose a safe location in accordance to the safety recommendations outlined.

When placing a fan on a table or shelf, always ensure that the power cord does not hang where it can accidentally be pulled and that the unit cannot accidentally fall.

### 🚫 DO NOT

Do not hang or mount the fan on a wall or ceiling.

## ■ ON / OFF AND SPEED CONTROL

The ON/Off and Speed is controlled by the Button Switch.

0- The Fan is switched Off

1- The Fan operates at the lowest speed

2- The Fan operates at the middle speed



## ANGLE ADJUSTMENT

Switch off the fan. Slightly loosen the Adjusting Screw by turning it anti-clockwise. Adjust the fan to the desired angle and then tighten the Adjusting Screw by turning it clockwise.



---

# CLEANING AND CARE

---

## ■ MAINTENANCE

Switch off and unplug from the power supply before assembling or disassembling and cleaning.

Keep the air vents at the rear of the main body free from dust or fluff– use a vacuum cleaner to remove these when necessary. Do not probe any opening to remove fluff.

Fan component parts should be cleaned using mild soap and a damp cloth or sponge. Do not allow any water or other liquid to enter the motor housing.

Thoroughly remove soap film with clean water.

### CAUTION

Do not use harsh detergents, chemical cleaners or solvents as they may damage the surface finish of the fan components.

Information requirements			
Description	Symbol	Value	Unit
Maximum fan flow rate	F	7.36	m <sup>3</sup> /min
Fan power input	P	15.70	W
Service value	SV	0.47	(m <sup>3</sup> /min)/W
Standby power consumption	P <sub>sb</sub>	0.00	W
Seasonal electricity consumption	Q	5.02	kWh/a
Fan sound power level	LWA	49.0	dB(A)
Maximum air velocity	C	1.53	Meters/sec
Measurement standard for service value	COMMISSION REGULATION (EU) No 206/2012 IEC60879:1986 EN50564:2011 EN60704-2-7:1998 EN60704-1:2010		

Contact details for obtaining more information

Lloytron Plc, Greenfold Way, Leigh, Lancashire, England. WN7 3XH

---

## WEEE/ENVIRONMENTAL PROTECTION

---



### ■ DISPOSAL OF ELECTRICAL AND ELECTRONIC EQUIPMENT

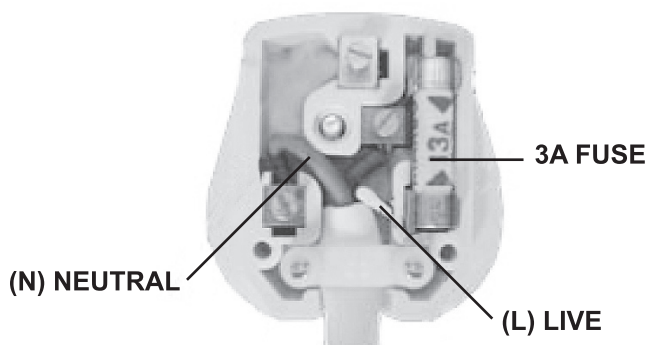
Do not dispose of this product with household waste. For the proper treatment, recovery and recycling please take this product to the appropriate waste collection point. If you are unsure where this may be, please contact your local authority. Improper disposal may be harmful to the environment.



---

## UK PLUG REWIRING

---



Your appliance operates on 220-240V~50Hz AC Mains and comes fitted with a 3-pin BSI Approved plug, so that it is ready for use by simply plugging into AC Mains. Should you need to change or refit a plug, proceed as follows: -

### ■ IMPORTANT:

The wires in the mains lead are coloured in accordance with the following code:

BLUE: NEUTRAL (N)  
BROWN: LIVE (L)

As the colours of the wires in the mains lead of this appliance may not correspond with the coloured markings identifying the terminals in your plug, proceed as follows:

The BLUE wire must be connected to the terminal which is marked with the letter "N" or coloured BLACK.  
The BROWN wire must be connected to the terminal which is marked with the letter "L" or coloured RED.

### ■ DO NOT CONNECT EITHER WIRE 'L' OR 'N' TO THE EARTH TERMINAL OF A 3-PIN PLUG

Always ensure that the Mains Cord is located into the Plug through the Cord Guard or Cable Clamp, and that the Cord Guard screws are tightened to clamp the Cord (outer sheath and inner coloured wires) in position in the Plug. Make sure the Plug top is also fitted securely.

The supply cord cannot be replaced. If the supply cord is damaged, the appliance should be scrapped.

This appliance must be protected by a 3 Amp fuse in a 13 Amp type (BS1363) plug.  
Should you need to replace the fuse, use only an ASTA approved BS1362 fuse.



---

## **STAYCOOL™ CUSTOMER SERVICES**

---

If you have any queries about this product then please contact Lloytron Customer Services online at:



**[www.lloytronhelpdesk.com](http://www.lloytronhelpdesk.com)**

To find out more about StayCool products, visit [www.lloytron.com](http://www.lloytron.com)

### **WARRANTY**

An additional manufacturer's warranty is not provided with this product. If the product develops a manufacturing fault in any way, then under Statutory Rights you must stop use and return it to the retailer in which it was purchased.



Distributed by Lloytron Plc, Laltex House, Leigh, England WN7 3XH