

STAY WARM®

OPERATING INSTRUCTIONS

1200w Halogen Heater



BEFORE OPERATION

CHECK THAT THIS UNIT HAS NOT BEEN DAMAGED IN TRANSIT.
THINK SAFETY!

THIS PRODUCT IS ONLY SUITABLE FOR WELL INSULATED SPACES OR
OCCASSIONAL USE.

DO NOT USE WITH EXTENSION LEADS OR TIMERS.

MODEL: F2106

thank you

Thank you for the purchase of this quality **STAYWARM** product. Used carefully and in accordance with the instructions enclosed, it should give you trouble free service over a long period of time. Please keep these instructions for future reference.

FEATURES

- Powerful, efficient heating & cooling
- Four heat settings (400w, 800w & 1200w)
- Tip Over Safety Protection
- Integral Carrying Handle



SPECIFICATIONS

Operating Voltage: 220-240v~50Hz

Power Consumption: 1200w

NOTE: The bulbs in this product cannot be changed. If a bulb fails, the unit must be scrapped

IMPORTANT SAFEGUARDS AND PRECAUTIONS

READ AND SAVE THESE INSTRUCTIONS

- For Household Use only.
- Only for use indoors.
- Before plugging into mains socket, check whether supply line voltage and current rating are in compliance with the rated electrical parameters shown on the rating label.
- Always unplug when not in use.



The supply cord cannot be replaced. If the cord is damaged the appliance should be scrapped.

- This appliance can be used by children aged from 8 years and above and persons with reduced physical, sensory or mental capabilities or lack of experience and knowledge if they have been given supervision or instruction concerning use of the appliance in a safe way and understand the hazards involved.
- Children shall not play with this appliance.
- Cleaning and user maintenance shall not be made by children unless they are older than 8 and supervised.
- Children of less than 3 years should be kept away unless continuously supervised.
- Children aged from 3 years and less than 8 years shall only switch on/off the appliance provided that it has been placed or installed in its intended normal operating position and they have been given supervision or instruction concerning use of the appliance in a safe way and understand the hazards involved.
- Children aged from 3 years and less than 8 years shall not plug in, regulate and clean the appliance or perform user maintenance.

DO NOT

- Do not use if the appliance is damaged or malfunctions.
- Do not place near or come in contact with flammable material (curtains, draperies, furnishings, wallpaper etc) whilst in operation.
- Do not use for any purposes other than the appliances intended use.
- Do not twist or kink the cable, or wrap it around the appliance.
- Do not plug or unplug the appliance with wet hands.
- Do not use outside or in damp conditions, including Greenhouses
- Do not cover the appliance whilst in operation.
- Do not operate by use of an external programmable timer, remote control system or other device that switches the heater on automatically, since a fire risk exists if the heater is covered or positioned incorrectly.
- Do not leave unattended when in use.
- Do not use in vehicles
- Do not use this heater in the immediate surroundings of a bath, a shower, washbasin or a swimming pool.
- Do not use an extension lead of any kind.



WARNING! In order to avoid overheating, do not cover.



 **WARNING**

- Keep the appliance at least 100cm away from any wall or other objects, including people.
- Always keep the appliance on the floor.
- Always check the product for damage before operation. If damaged, DO NOT USE.
- Keep away from hot surfaces, such as gas or electric hobs or ovens.
- If supply cord is damaged, do not use. Check before each use.
- To prevent damage to the cord, do not let it pass over sharp corners, edges or hot surfaces.
- This heater must not be located immediately below a socket outlet.

 **CAUTION**

Some parts of this product can become very hot and cause burns. Particular attention has to be given where children and vulnerable people are present.



LOCATION OF CONTROLS



A - Integral Carrying Handle

This heater comes equipped with an integral carrying handle for ease of transportation between locations.

B - Heat Settings

This heater contains 3 heat settings (400w, 800w and 1200w). Press 1 of the 4 buttons to get the heat setting you want.

C - Heating Element

During operation, the heating element will heat up to warm up the surrounding air temperature.

D - Rotatable, Collapsible Stand

For ease of transportation, the integral stand can be folded. During use, unfold the stand and position on a flat, stable surface.

E - Mains Cord

Connect the mains cord to a suitable 220-240v~50Hz mains supply.



OPERATION

BEFORE FIRST USE

⚠ WARNING

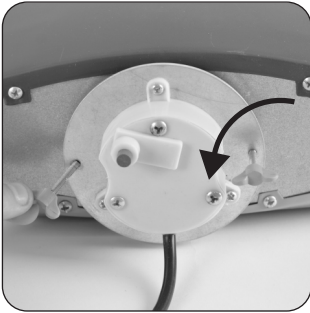
- Always check the unit before use for any damage to the fan or casement.
- During first use, the heating element may emit a slight smoke or vapour. This is completely normal and is caused by a protective oil used in production. This will last for approximately 10 seconds. The oil and vapour is harmless but it is recommended to keep away from sensitive skin.

⊘ DO NOT

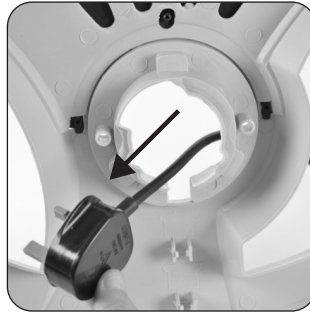
Do Not Use with an Extension Lead.

ASSEMBLY

Assemble the body frame and the base plate together as follows:



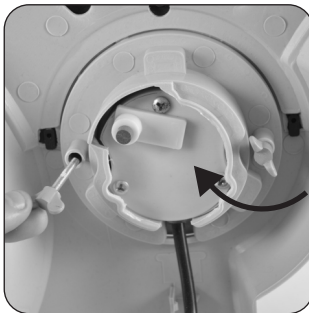
1 REMOVE the butterfly nuts from the lower part of the frame.



2 INSERT the power cord through the slot placed in the middle part of the base.



3 Then **ATTACH** the body frame to the base plate.



4 SECURE the body frame to the base plate by means of the two butterfly nuts.



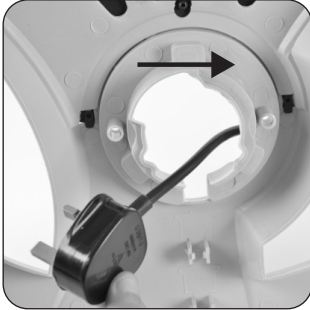
5 REMOVE the power cord clamp from the base. **INSERT** the power cord through slots and then **FIX IT** in place by **REPLACING** the clamp.



■ BEFORE USE

Ensure that your mains outlet has a current carrying capacity of at least 10Amps.

■ OPERATION



1 GENTLY PLUG the mains plug into the 220-240V ~ 50Hz AC mains outlet.



2 SWITCH ON the appliance by **PUSHING DOWN** the "power on" switch.



3 Heater oscillation is controlled via the oscillation on/off switch. To start the oscillation, simply **PRESS** the switch **DOWN**. To stop oscillation, **PUSH** the switch **DOWN AGAIN** so that it **RELEASES**.



4 Between the "power-on" switch and the oscillation switch, there are several other switches for selecting additional heating power. **PRESSING DOWN** each would **ADD** additional 400W of heating power.

■ ADDITIONAL SAFETY FEATURES

This unit has been provided with an overheating safety that turns 'OFF' the unit if there is a technical malfunction or if it is used wrongly. If this happens, you must;

1 Turn the Control Dial to '0' and pull out the plug.

2 Make sure the unit is standing straight up (not tilted in any direction) so that the tip-over safety switch rod is not actuated.

Note: You must always take care that there is sufficient distance for safety (at least 100cm) between the heater and the wall or other objects. The airflow must not be impeded by anything.



IMPORTANT NOTICE

THERE ARE NO SERVICEABLE PARTS ON THIS APPLIANCE. HEATING ELEMENTS ARE NOT REPLACEABLE.

DO NOT COVER

CLEANING AND CARE

■ MAINTENANCE

This appliance has been designed to operate over a long period of time with a minimum of maintenance. Continuous satisfactory operation depends upon proper care and regular cleaning.

WARNING

Before performing any maintenance or cleaning of this appliance, disconnect the appliance from the electrical supply and is turned off

■ CLEANING

1 Any ventilation slots should be occasionally **CLEANED** with a **CLEAN, DRY** paint brush.

2 The exterior surface should be **CLEANED** with a **DAMP CLOTH** only.

DO NOT

Do Not use steel wool, scouring pads or abrasive cleaners on non-stick surfaces.

WARNING

The Fireguard cannot be removed. The reflectors cannot be cleaned.

■ STORAGE

Allow the appliance to cool before storing away.

DO NOT

Do not wrap cord around appliance.
Do not store in temperatures outside of 5°C - 23°C.

Failure to comply could cause damage to the product.

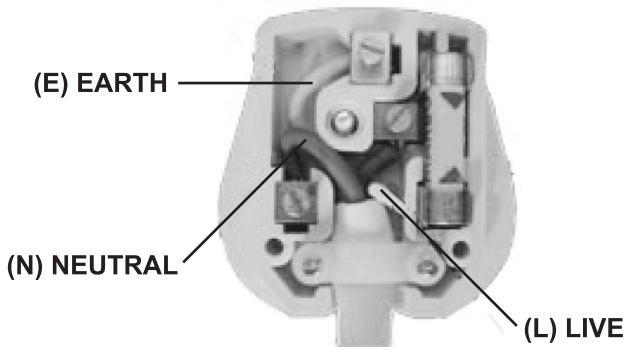


TECHNICAL INFORMATION

Model Number:		F2106	
Item	Symbol	Value	Unit
Heat Output			
Nominal Heat Output	P_{nom}	1.2	kW
Minimum Heat Output (indicative)	P_{min}	N/A	kW
Maximum Continuous Heat Output	$P_{max,c}$	N/A	kW
Auxiliary Electricity Consumption			
At Nominal Heat Output	e_{lmax}	N/A	kW
At Minimum Heat Output	e_{lmin}	N/A	kW
In Standby Mode	e_{lsb}	0	kW
Type of Heat Input			
Manual heat charge control, with integrated thermostat			<input type="checkbox"/> Yes <input checked="" type="checkbox"/> No
Manual heat charge control with room and/or outdoor temperature feedback			<input type="checkbox"/> Yes <input checked="" type="checkbox"/> No
Electronic heat charge control with room and/or outdoor temperature feedback			<input type="checkbox"/> Yes <input checked="" type="checkbox"/> No
Fan assisted heat output			<input type="checkbox"/> Yes <input checked="" type="checkbox"/> No
Type of Heat Output/Room Temperature Control			
Single stage heat output and no room temperature control			<input type="checkbox"/> Yes <input checked="" type="checkbox"/> No
Two or more manual stages, no room temperature control			<input checked="" type="checkbox"/> Yes <input type="checkbox"/> No
With mechanical thermostat room temperature control			<input type="checkbox"/> Yes <input checked="" type="checkbox"/> No
With electronic room temperature control			<input type="checkbox"/> Yes <input checked="" type="checkbox"/> No
Electronic room temperature control plus day timer			<input type="checkbox"/> Yes <input checked="" type="checkbox"/> No
Electronic room temperature control plus week timer			<input type="checkbox"/> Yes <input checked="" type="checkbox"/> No
Other Control Options			
Room temperature control, with presence detection			<input type="checkbox"/> Yes <input checked="" type="checkbox"/> No
Room temperature control, with open window detection			<input type="checkbox"/> Yes <input checked="" type="checkbox"/> No
With distance control option			<input type="checkbox"/> Yes <input checked="" type="checkbox"/> No
With adaptive start control			<input type="checkbox"/> Yes <input checked="" type="checkbox"/> No
With working time limitation			<input checked="" type="checkbox"/> Yes <input type="checkbox"/> No
With black bulb sensor			<input type="checkbox"/> Yes <input checked="" type="checkbox"/> No
Contact Details		Distributed by Lloytron Plc., Leigh, UK, WN7 3XH	



FITTING A NEW UK PLUG




Your appliance operates on 220-240V~50Hz AC Mains and comes fitted with a 3-pin BSI Approved plug, so that it is ready for use for the UK or Eire market. If for any reason you need to fit a new plug, the flexible mains lead must be connected as shown below: -

■ IMPORTANT:

The wires in the mains lead are coloured in accordance with the following code:

BLUE:	NEUTRAL (N)
BROWN:	LIVE (L)
GREEN AND YELLOW:	EARTH (E)

As the colours of the wires in the mains lead of this appliance may not correspond with the coloured markings identifying the terminals in your plug, proceed as follows:

The BLUE wire must be connected to the terminal which is marked with the letter "N" or coloured BLACK.
The BROWN wire must be connected to the terminal which is marked with the letter "L" or coloured RED.
The GREEN AND YELLOW wire must be connected to the terminal which is marked with the letter "E", the symbol  or coloured GREEN.

■ DO NOT CONNECT EITHER WIRE 'L' OR 'N' TO THE EARTH TERMINAL OF A 3-PIN PLUG

Always ensure that the Mains Cord is located into the Plug through the Cord Guard or Cable Clamp, and that the Cord Guard screws are tightened to clamp the Cord (outer sheath and inner coloured wires) in position in the Plug. Make sure the Plug top is also fitted securely.

The supply cord cannot be replaced. If the supply cord is damaged, the appliance should be scrapped.

This appliance must be protected by a 7 Amp fuse in a 13 Amp type (BS1363) plug. Should you need to replace the fuse, use only an ASTA approved BS1362 fuse.



WEEE/ENVIRONMENTAL PROTECTION



■ DISPOSAL OF ELECTRICAL AND ELECTRONIC EQUIPMENT

Do not dispose of this product with household waste. For the proper treatment, recovery and recycling please take this product to the appropriate waste collection point. If you are unsure where this may be, please contact your local authority. Improper disposal may be harmful to the environment.



STAYWARM[®] CUSTOMER SERVICES

If you have any queries about this product then please contact Lloytron Customer Services online at:



www.lloytronhelpdesk.com

To find out more about StayWarm products, visit www.lloytron.com



Distributed in UK by Lloytron Ltd, Laltex House, Leigh, England WN7 3XH
Distributed in Europe by Laltex Ireland Ltd, Dublin 2, D02 AY86