

STAYCOOL™

OPERATING INSTRUCTIONS

Arctic Blast Personal Air Cooler



BEFORE OPERATION

CHECK THAT THIS UNIT HAS NOT BEEN
DAMAGED IN TRANSIT. THINK SAFETY!

MODEL: F9001WH

thank you

Thank you for the purchase of this quality **STAYCOOL** product. Used carefully and in accordance with the instructions enclosed, it should give you trouble free service over a long period of time. Please keep these instructions for future reference.

FEATURES

- Compact design
- USB 5v powered
- LCD Display
- Input and Output Temperature Readings
- 5x fan speed settings
- 0.5-12hour OFF Timer
- Whisper Quiet Night Mode
- Variable Water Tank Colour and Brightness Settings



SPECIFICATIONS

Operating Voltage: USB 5v DC, 1.5-2.0A

IN THE BOX

- Air Cooler unit
- Filter Cartridge
- Spare rubber sealing ring
- 1.2m Micro USB Cable



IMPORTANT SAFEGUARDS AND PRECAUTIONS

READ AND SAVE THESE INSTRUCTIONS

- For Household Use only. Not intended for commercial use.
- Only for use indoors.
- Before plugging into any power source, please check the rating voltage and power requirements as shown on the Rating Marks for this appliance.
- To prevent damage to the cord, do not let it pass over sharp corners, edges or hot surfaces.
- Always unplug when not in use.
- To prevent against the risk of electric shock, do not submerge any part of this appliance in water, unless advised in this manual.
- This unit works best in non-polluted areas. Large dust/dirt particles may reduce the life of this unit.
- If a leak or spill occurs on the surface of the unit, unplug the appliance and allow drying for 24 hours.

- This appliance can be used by children aged from 8 years and above and persons with reduced physical, sensory or mental capabilities or lack of experience and knowledge if they have been given supervision or instruction concerning use of the appliance in a safe way and understand the hazards involved. Children shall not play with this appliance. Cleaning and user maintenance shall not be made by children unless they are older than 8 and supervised.
- Children of less than 3 years should be kept away unless continuously supervised.
- Children aged from 3 years and less than 8 years shall only switch on/off the appliance provided that it has been placed or installed in its intended normal operating position and they have been given supervision or instruction concerning use of the appliance in a safe way and understand the hazards involved.
- Children aged from 3 years and less than 8 years shall not plug in, regulate and clean the appliance or perform user maintenance.

WARNING

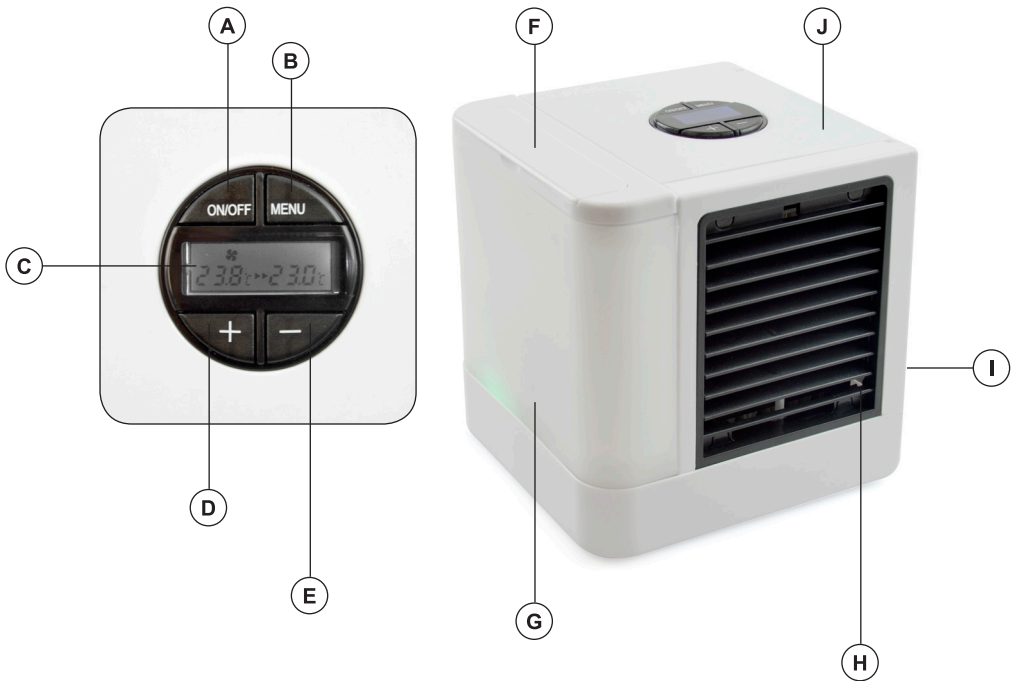
- Keep the appliance on a level surface and do not tilt when filled with water. Some water may remain, even if water tank is empty.
- Always check the product for transit damage before operation. If damaged, DO NOT USE!



⊘ DO NOT

- Do not place in direct sunlight for extended periods of time.
- Do not touch the power adaptor or power source with wet hands.
- Do not place items on top of this appliance.
- Do not block the Inlet or Outlet grille.
- Do not turn the appliance upside down.
- Do not place near open flames, fire sources, heater or other electrical appliances.
- Do not place fluids other than distilled or tap water into this unit.
- Do not fill with hot water, fragrances or chemicals.

LOCATION OF CONTROLS



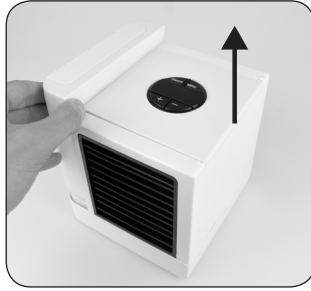
- A** - On/Off Button
- B** - Menu Selection Button
- C** - LCD Display Screen
- D** - + Up Button
- E** - - Down Button
- F** - Water Tank Filling Lid
- G** - Removeable Water Tank
- H** - Moveable and Directional Shutters
- I** - USB Connection
- J** - Unit Lid with Cartridge Inside



FIRST SETUP FROM PACKAGING



1. Remove from packaging.



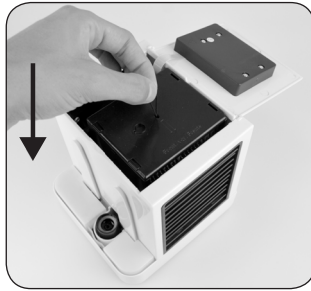
2. Remove the water tank by pulling the tank up and sliding off the grooves.



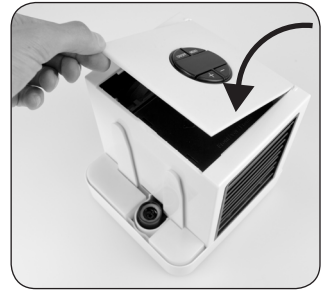
3. Open the lid of the unit and pull out the Cartridge that is wrapped in protective plastic.



4. Carefully remove the plastic wrapping from the cartridge and dispose correctly in the recycle bin.



5. Put the cartridge back inside the unit. Note it can be placed in either orientation with fins facing the grill.



6. Close Lid of unit.



7. Under the water tank is a rubber sealing ring. Ensure this is attached to the nozzle of the water tank.



8. Slide the water tank back onto the grooves of the unit.

Note: You will also have a spare sealing ring inside the packaging for future use.



OPERATION



1. Place unit on a level and flat surface approximately 60cm to 100cm from the person.

Note: This unit is only to cool your personal space and not a room cooler.



2. Remove the water tank and fill under tap, the replace back onto the unit. Alternatively, use a jug of water to fill the water tank while it remains on the unit, but first ensure the unit is not plugged into the USB cable.



3. Allow the filter to absorb the water for a few minutes.



4. Using the USB cable provided, plug into any USB 5v DC power source. This could be a Mains USB Adaptor, Computer USB Socket or Powerbank.



5. Press and hold ON/OFF switch at top of unit for 3 seconds to turn the unit ON.



6. The LCD Screen will illuminate and show the Input Temperature and the Output Temperature. Default temperature setting is Celsius.



7. The outlet grille has moveable fins to allow for the change of direction for the cool air. Simply push the fins up or down to change Direction.



8. Press and hold ON/OFF switch at top of unit for 3 seconds to turn the unit OFF.

Note: Ice cubes may be added to the water tank in warm conditions to reduce the output temperature slightly lower. DO NOT freeze the water inside the water tank.

■ FAN SPEED

1. The unit should be turned ON.
2. Press – or + to reduce or increase the fan speed. Default speed is fast and shows 5. Slow speed is 1.

We recommend to remove the water tank and the unit is run on High Fan Speed for 5 minutes before turning OFF to allow the unit to dry out before storage.



■ OFF TIMER

1. The unit should be turned ON.
2. Press MENU button, once to show X symbol flashing.
3. Default setting is 0 hours
4. Press + to increase setting from 0.5, 1.0, 1.5, 2, 3...12 hours
5. Press – to decrease setting
6. After 8 seconds without pressing any buttons, the Menu will be saved and will go back to default screen.

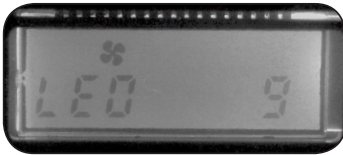


■ WATER TANK LED COLOUR

1. The unit should be turned ON.
2. Press MENU button twice to show word LED and a number.
3. Default setting is LED 9, which is colour changing setting.
4. Press + to increase setting from 0 - 9
5. Press – to decrease setting from 9 - 0
6. After 8 seconds without pressing any buttons, the Menu will be saved and will go back to default screen.

0 = OFF
1 = Red
2 = Purple
3 = Green
4 = Blue

5 = Light Blue
6 = Pink
7 = Yellow
8 = White
9 = Auto colour changing



■ WATER TANK LED COLOUR BRIGHTNESS

1. The unit should be turned ON.
2. Press MENU button three times to show word LED 8 and a number.
3. Default setting is 3
4. Press + to increase setting from 1 - 5
5. Press – to decrease setting from 5 - 1
6. After 8 seconds without pressing any buttons, the Menu will be saved and will go back to default screen.

Note: 1 is lowest intensity, 5 is brightest



■ NIGHT TIME OPERATION

This selection turns off the LED water tank, the LCD screen and reduces the fan speed to quiet whisper mode. So the unit does not keep you awake with bright lights or noise.

1. The unit should be turned ON.
2. Press MENU button four times to show word NNO and a number.
3. Default setting is 0
4. Press – to decrease setting to 1, will set in Night Mode
5. Press + to increase setting will take out of Night Mode back into Day Mode



■ CHANGE FROM CELSIUS TO FAHRENHEIT

This selection turns changes the temperature readings from Celsius to Fahrenheit.

1. The unit should be turned ON.
2. Press MENU button five which will show the temperature readings.
3. Default setting is C.
4. Press – to change to Fahrenheit F.
5. Press + to change to Celsius C.
6. After 8 seconds without pressing any buttons, the Menu will be saved and will go back to default screen.

Note: Settings are not stored after the power has been turned off.



CLEANING AND CARE

- There are no serviceable parts inside this product that require your attention or servicing. Do not try to open the outer case.
- If the Filter Cartridge becomes broken, damaged or worn, then contact the manufacturer for advice on obtaining a replacement cartridge.
- Before cleaning the unit, please make sure it is disconnected from any power source, and you have removed the water from the tank and the unit.
- The outside case can be cleaned using a slightly damp lint-free cloth [a small amount of detergent can be used if required].
- To remove any dust particles etc. from inside the front grill, or the rear air intakes, you can use a regular vacuum cleaner.
- Always make sure the unit is completely dry before using.
- With sensible care and attention this air cooler will give you many years of good service.

■ STORAGE

If you are not going to use the Air Cooler for a while it is best to make sure it is clean and dry and then store it inside a plastic bag in a cool dry place. Remove the Filter Cartridge and soak in anti-bacterial solution for 30 minutes, then remove and allow drying before storage.

■ TROUBLESHOOTING

- If the water tank begins to leak, then check the sealing ring has not been damaged or is missing. A replacement sealing ring was provided with this unit.
- If local water contains impurities, then the Filter Cartridge may show signs of a bacterial build-up. In this situation, we recommend cleaning the filter with Anti-Bacterial solution, and then using Distilled Water, boiled tap water or Tap Water with a few drops of lemon.
- If Air cooler is not powering ON, then check the power source and ensure unit has not been tilted whilst containing water.



WEEE/ENVIRONMENTAL PROTECTION



■ DISPOSAL OF ELECTRICAL AND ELECTRONIC EQUIPMENT

Do not dispose of this product with household waste. For the proper treatment, recovery and recycling please take this product to the appropriate waste collection point. If you are unsure where this may be, please contact your local authority. Improper disposal may be harmful to the environment.



STAYCOOL™ CUSTOMER SERVICES

If you have any queries about this product then please contact Lloytron Customer Services online at:



www.lloytronhelpdesk.com

To find out more about StayCool products, visit www.lloytron.com

WARRANTY

An additional manufacturer's warranty is not provided with this product. If the product develops a manufacturing fault in any way, then under Statutory Rights you must stop use and return it to the retailer in which it was purchased.



Distributed by Lloytron Plc, Laltex House, Leigh, England WN7 3XH