

STAYCOOL®

OPERATING INSTRUCTIONS

Arctic Blast V2



BEFORE OPERATION

CHECK THAT THIS UNIT HAS NOT BEEN
DAMAGED IN TRANSIT. THINK SAFETY!

MODEL: F9002WH

thank you

Thank you for the purchase of this quality **STAYCOOL** product. Used carefully and in accordance with the instructions enclosed, it should give you trouble free service over a long period of time. Please keep these instructions for future reference.

FEATURES

- Compact design
- USB 5v powered
- 3 fan speed settings
- 7 coloured water tank
- Atomiser Diffuser
- UV LED Filter Steriliser
- Battery Operated (Lithium 18650 battery required)



SPECIFICATIONS

- Operating Voltage: USB 5v DC, 1.5-2.0A
- Max Air Volume: 138m3/h

IN THE BOX

- Air Cooler unit
- Filter Cartridge
- 1.2m Micro USB Cable

LOCATION OF CONTROLS



- A** - On/Off Button
- B** - FAN Button
- C** - LED LIGHT Button
- D** - UV LED Button
- E** - ATOMISER Button

- F** - Lid
- G** - Water Tank
- H** - Moveable and Directional Shutters
- I** - USB Connection
- J** - Atomiser Diffuser



IMPORTANT SAFEGUARDS AND PRECAUTIONS

READ AND SAVE THESE INSTRUCTIONS

- For Household Use only. Not intended for commercial use.
- Only for use indoors.
- Before plugging into any power source, please check the rating voltage and power requirements as shown on the Rating Marks for this appliance.
- To prevent damage to the cord, do not let it pass over sharp corners, edges or hot surfaces.
- Always unplug when not in use.
- To prevent against the risk of electric shock, do not submerge any part of this appliance in water, unless advised in this manual.
- This unit works best in non-polluted areas. Large dust/dirt particles may reduce the life of this unit.
- If a leak or spill occurs on the surface of the unit, unplug the appliance and allow drying for 24 hours.

- This appliance can be used by children aged from 8 years and above and persons with reduced physical, sensory or mental capabilities or lack of experience and knowledge if they have been given supervision or instruction concerning use of the appliance in a safe way and understand the hazards involved. Children shall not play with this appliance. Cleaning and user maintenance shall not be made by children unless they are older than 8 and supervised.
- Children of less than 3 years should be kept away unless continuously supervised.
- Children aged from 3 years and less than 8 years shall only switch on/off the appliance provided that it has been placed or installed in its intended normal operating position and they have been given supervision or instruction concerning use of the appliance in a safe way and understand the hazards involved.
- Children aged from 3 years and less than 8 years shall not plug in, regulate and clean the appliance or perform user maintenance.

WARNING

- Keep the appliance on a level surface and do not tilt when filled with water. Some water may remain, even if water tank is empty.
- Always check the product for transit damage before operation. If damaged, DO NOT USE!



DO NOT

- Do not place in direct sunlight for extended periods of time.
- Do not touch the power adaptor or power source with wet hands.
- Do not place items on top of this appliance.
- Do not block the Inlet or Outlet grille.
- Do not turn the appliance upside down.
- Do not place near open flames, fire sources, heater or other electrical appliances.
- Do not place fluids other than distilled or tap water into this unit.
- Do not fill with hot water, fragrances or chemicals.



FIRST SETUP FROM PACKAGING



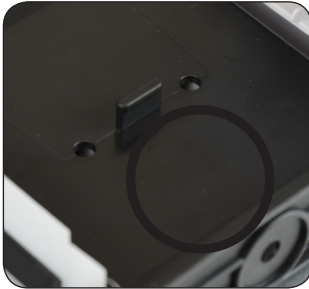
1. Remove from packaging.



2. Open the lid of the unit and pull out the Cartridge that is wrapped in protective plastic.



3. Carefully remove the plastic wrapping from the cartridge and any foam pads, then dispose correctly in the recycle bin.



4. Put the cartridge back inside the unit. Note the arrow on top to show which way to face the front.



5. Close Lid of unit.

OPERATION



1. Place unit on a level and flat surface approximately 60cm to 100cm from the person.



2. Open the lid and fill the water tank using a jug so the water level is just above the highest point of the water level window.



3. Allow the filter to absorb the water for a few minutes.

Note: This unit is only to cool your personal space and not a room cooler.



4. Using the USB cable provided, plug into any USB 5v DC power source. This could be a Mains USB Adaptor, Computer USB Socket or Powerbank.

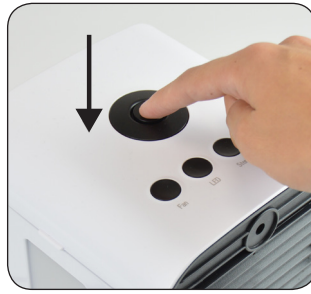


5. Press and hold ON/OFF switch at top of unit for 3 seconds to turn the unit ON.





6. The outlet grille has moveable fins to allow for the change of direction for the cool air. Simply push the fins up or down to change Direction.

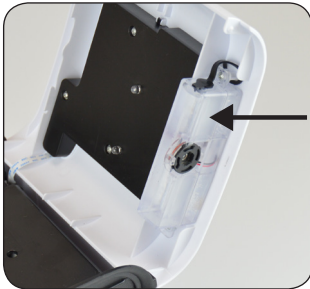


7. Press and hold ON/OFF switch at top of unit for 3 seconds to turn the unit OFF.

Note: Small Ice cubes may be added to the water tank in warm conditions to reduce the output temperature slightly lower. DO NOT freeze the water inside the water tank.

■ ATOMISER DIFFUSER

This unit has a small atomiser that can introduce very fine mist of water droplets into the direction of the user. This can assist with asthma and hayfever sufferers.



1. Open the lid and there is a small water container on the underside of the lid.



2. Open the black rubber stopper and using the pipette supplied, fill the container with water.



3. Re-seal the container using the black rubber stopper.



4. Close the lid.

■ USING THE ATOMISER DIFFUSER

1. Press the “Atomiser” button on the lid. This will switch on the atomiser that will operate for 1 minute every 5 minutes.

■ FAN SPEED

1. The unit should be turned ON.
2. Press Fan button to change from Low, Medium or High Fan speed.

We recommend to remove the water tank and the unit is run on High Fan Speed for 5 minutes before turning OFF to allow the unit to dry out before storage.

■ UV STERILISER LIGHT

The unit is fitted with LED UV Lights that help to reduce bacteria build-up within the filter.

1. Press the “UV Light” button on top of unit to turn on or off the UV Lights.

■ WATER TANK LED COLOUR

1. Default setting is for Auto Colour Change
2. Press the “LED” button will freeze the colour that was last shown in the auto colour change sequence.
3. Press the “LED” button again will turn OFF the LED.
4. Press the “LED” button a third time will restart the Auto Colour Sequence

■ BATTERY USE

The unit can be used with a lithium 18650 battery, not supplied.

1. Ensure there is no water inside the unit.
2. Turn unit upside down and open the battery compartment.
3. Observing correct polarity, insert the 18650 battery.
4. To charge the battery, plug into USB using supplied cable and the battery will be fully charged within 5 hrs.



CLEANING AND CARE

- There are no serviceable parts inside this product that require your attention or servicing. Do not try to open the outer case.
- If the Filter Cartridge becomes broken, damaged or worn, then contact the manufacturer for advice on obtaining a replacement cartridge.
- Before cleaning the unit, please make sure it is disconnected from any power source, and you have removed the water from the tank and the unit.
- The outside case and be cleaned using a slightly damp lint-free cloth [a small amount of detergent can be used if required].
- To remove any dust particles etc. form inside the front grill, or the rear air intakes, you can use a regular vacuum cleaner.
- Always make sure the unit is completely dry before using.
- With sensible care and attention this air cooler will give you many years of good service.

■ STORAGE

If you are not going to use the Air Cooler for a while it is best to make sure it is clean and dry and then store it inside a plastic bag in a cool dry place. Remove the Filter Cartridge and soak in anti-bacterial solution for 30 minutes, then remove and allow drying before storage.

■ TROUBLESHOOTING

- If the water tank begins to leak, then check the sealing ring has not been damaged or is missing. A replacement sealing ring was provided with this unit.
- If local water contains impurities, then the Filter Cartridge may show signs of a bacterial build-up. In this situation, we recommend cleaning the filter with Anti-Bacterial solution, and then using Distilled Water, boiled tap water or Tap Water with a few drops of lemon.
- If Air cooler is not powering ON, then check the power source and ensure unit has not been tilted whilst containing water.

■ FILTER

The filter should be replaced every 2-3 months of use.



WEEE/ENVIRONMENTAL PROTECTION



■ DISPOSAL OF ELECTRICAL AND ELECTRONIC EQUIPMENT

Do not dispose of this product with household waste. For the proper treatment, recovery and recycling please take this product to the appropriate waste collection point. If you are unsure where this may be, please contact your local authority. Improper disposal may be harmful to the environment.



The rechargeable battery contains substances that may pollute the environment. At end of life for the product, always remove the battery and separate before you discard the product at your local waste collection point. Both battery and product should be disposed separately.

If you have trouble removing the battery, then you should contact a qualified technician or authorised service centre.

Contact your local authority for details and locations of official waste collection points. Do not dispose of batteries or product with normal household waste.



STAYCOOL[®] CUSTOMER SERVICES

If you have any queries about this product then please contact Lloytron Customer Services online at:



www.lloytronhelpdesk.com

To find out more about StayCool products, visit www.lloytron.com

WARRANTY

An additional manufacturer's warranty is not provided with this product. If the product develops a manufacturing fault in any way, then under Statutory Rights you must stop use and return it to the retailer in which it was purchased.



Distributed by Lloytron Plc, Laltex House, Leigh, England WN7 3XH