



OPERATING INSTRUCTIONS

Intelligent Hair Dryer



MODEL: H1702

thank you

Thank you for the purchase of this quality **PAUL ANTHONY** product. Used carefully and in accordance with the instructions enclosed, it should give you trouble free service over a long period of time. Please keep these instructions for future reference.

FEATURES

- 10x More Powerful than standard 2000w DC hairdryer
- 1600W 110,000rpm High Power Brushless BLDC Motor
- Focused heat from low power with high velocity controlled air
- Ultra quiet running
- Intelligent Heat Control, regulates temperature 30-40 times per second
- 4x temperature settings
Cool Shot (28C) for style setting
Low (60C) for gentle drying
- Medium (100C) for regular drying
High (120C) for fast drying and styling
- 3x airflow speed settings
Low – for diffusing
Medium – for regular drying
High – for fast drying and styling
- 2x magnetic attachments, including
Standard Concentrator Nozzle
Diffuser
- Negative Ion technology to reduce frizz
- Ultra safe over heat protection

SPECIFICATIONS

- Operating Voltage: 220-240v~50/60Hz
- Power Output: 1600w max.
- Ambient Operating Temperature: 5C to 23C

Note: Do not operate if ambient temperature is outside this range as this may damage the product.

IMPORTANT SAFEGUARDS AND PRECAUTIONS

SAVE THESE INSTRUCTIONS

- Read all instructions carefully
- For Household Use only.
- Only for use indoors.

DO NOT

Do not use outside or in damp conditions.



- Before plugging into mains socket, check whether supply line voltage and current rating are in compliance with the rated electrical parameters shown on the rating label.
- Keep away from hot surfaces, such as gas or electric hobs and ovens etc

DO NOT

Do not use for any purposes other than the appliances intended use.

- This product is not intended to be operated by means of an external timer or separate remote control system.
- To prevent damage to the power cord, do not let it pass over sharp corners, edges or hot surfaces.
- If the power cord is damaged, do not use. Check before each use!

The supply cord cannot be replaced. If the cord is damaged the appliance should be scrapped.

DO NOT

Do not use if any part of this appliance is damaged in any way.

- Always unplug when not in use.
- To prevent against the risk of electric shock, do not submerge any part of this appliance in water, unless advised in this manual.

- This appliance can be used by children aged from 8 years and above and persons with reduced physical, sensory or mental capabilities or lack of experience and knowledge if they have been given supervision or instruction concerning use of the appliance in a safe way and understand the hazards involved.
- Children shall not play with this appliance.
- Cleaning and user maintenance shall not be made by children without supervision.

WARNING

- Keep the appliance and its cord out of reach of children less than 8 years.
- Should this appliance fall into water, pull the plug out of the wall immediately. Do not place your hand in the water. The appliance should then be checked by a qualified electrician before use again!
- The air inlet and outlet openings should never be obstructed.
- Keep your hair away from the immediate vicinity of the air inlet opening.
- The safety grill fitted in the air inlet opening is designed to prevent hair being drawn in. If the grill becomes clogged, it should be cleaned (e.g. with vacuum cleaner or brush), as otherwise the airflow will be obstructed to such an extent that the thermal cut-out will operate.



DO NOT

- Do not touch the scalp when using.
- Do not allow the supply cord to come in contact with the heating element during use.
- Do not direct aerosols or water sprays into the appliance.
- Do not use the hair dryer with wet hands or wet hair.

- When drying your hair in rollers, do not allow any clips, hairpins etc to project more than 10mm (finger width) so as to ensure that they do not come in contact with the live parts inside the appliance.
- When using clips and hairpins, these may become hot with prolonged drying. It is advised that these are removed.



• **WARNING!** Do not use this appliance near bathtubs, showers or other vessels containing water.

- When the appliance is used in a bathroom, unplug it after use since the proximity of water presents a hazard even when the appliance is switched off.
- For additional protection, the installation of a residual current device (RCD) having a rated residual operating current of 30mA is advisable in the electric circuit supplying the bathroom. Ask your installer for advice.

WARNING – SPECIAL SAFETY CUT OUT DEVICE

This hairdryer is fitted with a special safety cut-out device.

If the product overheats due to a fault then the power will be removed from the device and the unit will stop working.

First you should check the unit to find the cause of the fault, or take to an engineer.

Check the fan is operating at full speed and the air inlet is not blocked.

Do not use the hairdryer if fault cannot be resolved.

The safety device is designed so that it will only reset if unplugged for more than 2 minutes.



LOCATION OF CONTROLS



- A – ON/OFF Button
- B – Wind Speed Adjustment
- C – Temperature Adjustment
- D – Cool Shot
- E – Air Inlet Filter



OPERATION

■ INSTRUCTIONS

Ensure hands are dry before the hairdryer is powered on.

■ TURN ON

Connect to the power supply, and press the ON/OFF button.

Adjust the desired temperature according to your requirements.

When you first turn on the hair dryer, the default is the minimum temperature, minimum wind speed, the first red LED light of the button will light up.

■ WIND SPEED ADJUSTMENT (WHITE LED)

You can set the wind speed at three speeds by the wind speed adjustment button.

Press 1-2-3-2-1 to adjust the wind speed by changing one step at a time, and the corresponding white LED light will be on.

1	1x white LED	Low
2	2x white LED's	Medium
3	3x white LED's	High

■ TEMPERATURE REGULATION (RED LED)

You can set the temperature at 3 heat settings by using the temperature adjustment button.

Press 1-2-3-2-1 to adjust the temperature settings by changing one step at a time and the corresponding red led will be on.

1	1x Red LED	60C
2	2x Red LED's	100C
3	3x Red LED's	120C

■ COOL SHOT

Press the Cool Shot button will automatically turn the temperature to 28C for style setting.

■ TURN OFF

Press the on/off button.



■ **BASIC DRYING**

1. Gently towel dry hair to remove any excess water. Avoid rubbing hair too vigorously as this could cause split ends to form. Use a wide toothed comb to detangle hair.
2. Plug the power cord into a suitable mains supply, ensuring that the unit is turned off.
3. Begin drying hair by setting the temperature settings to the highest setting. Use your fingers to 'comb' through and divide hair to help dry more effectively.
4. When hair is almost dry all over, set the temperature settings to a lowest setting based on desired styling.
5. Divide hair into manageable sections and begin brushing from the nape of the neck towards the scalp, followed very closely by the dryer as you work your way through the hair. Continue this process in small sections at a time.

RECOMMENDED SETTINGS		
Hair Type	Airflow	Heat
Short & Curly	Low	Low
Short & Sculptured	Low	Low
Medium & Curly	Low	Low
Medium & Sleek	High	Medium
Medium & Sculptured	Low	Medium
Long & Curly	Low	High
Long & Sleek	High	High
Long & Sculptured	High	High

■ **STRAIGHT, SMOOTH HAIR STYLING**

1. Before operating the hairdryer, attach the concentrator nozzle attachment to the hairdryer, ensuring that it clips into place securely.
2. Using a large, round brush, brush the hair from underneath.
3. Pull the hair down until the hair is fully extended and taut.
4. Set the speed/heat settings to the highest setting and run the hairdryer slowly up and down the length the hair several times until it is dry.
5. Repeat this process with all sections of hair until it is completely dry all over.

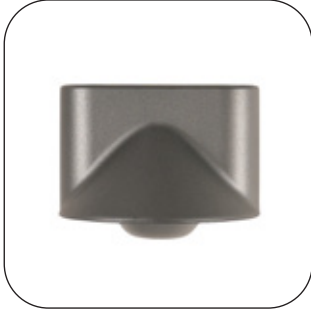
■ **CURLY HAIR**

1. Set the speed/heat settings to the lowest setting and move the hairdryer quickly around your head.
2. As the hair is drying, scrunch it using your preferred styling product or twirl strands of hair around your fingers to add definition.



■ DIFFUSER ATTACHMENT

This attachment is for wavy hair. Scrunch wet hair and place in diffuser on medium heat with a low airflow.



WIDE CONCENTRATOR NOZZLE

The wider, thinner design of the concentrator nozzle creates a high-velocity blade of air that's perfect for styling. Since the air is focused, you can style one section at a time – without disturbing the rest.



DIFFUSER

Designed to evenly disperse air around your curls. The Diffuser simulates natural drying, helping to reduce frizz and define your curls and waves. The long prongs allow you to style more hair with greater control – and reach deeper into your hair.



FOUR TEMPERATURE SETTINGS

There are three individual heat settings of 60C, 100C and 120C, plus Cool Shot to allow for full versatility when drying and setting hair styles. Cool Shot uses 28C temperature for constant cool air perfect for style setting.



INTELLIGENT HEAT CONTROL

Regulates air temperature to prevent excessive heat damage and protect natural shine with an intelligent microchip checking and correcting the temperature 30-40 times per second.



NEGATIVE ION

The Ionic technology uses negative ions to breakdown water molecules in wet hair, this then reduces frizz and increases the drying process leaving the hair smoother and shinier.



CLEANING AND CARE

■ MAINTENANCE

The Hair Dryer is virtually maintenance-free. Keep all vents and openings clear of dirt and dust. If cleaning becomes necessary, disconnect the unit from the power source, ensure it has cooled completely and wipe the exterior with a damp cloth, then wipe dry.

If any abnormal condition occurs, unplug the unit, allow it to cool and return it for repair to an authorized service representative only. Repairs should not be attempted by the user.

- Always disconnect the hair dryer before cleaning.
- Never immerse the hair dryer in water.
- It is sufficient to wipe the exterior over with a damp cloth and then wipe dry.
- A soft dry brush may be used to remove dust and hairs from the air inlet grille, to ensure proper airflow at all times.

WARNING

To avoid the risk of electrocution – KEEP AWAY FROM WATER HAZARDS



- DO NOT IMMERSE THE UNIT IN WATER OR ANY OTHER LIQUID
- DO NOT TAKE OR USE THIS APPLIANCE IN THE BATHROOM
- DO NOT USE A HAIR DRYER WITH WET HANDS
- NEVER USE THE HAIR DRYER IN THE BATH, UNDER A SHOWER OR OVER A WASH BASIN FULL OF WATER
- DO NOT REACH FOR THE HAIR DRYER IF IT HAS FALLEN INTO WATER OR ANY OTHER LIQUID. UNPLUG IT IMMEDIATELY.

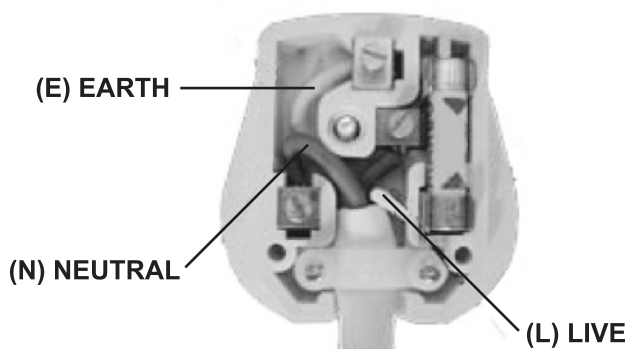
■ STORAGE

When not in use, store the Hair Dryer out of reach of children in a safe, dry location. Do not jerk or strain cord at plug connections. Do not wrap the line cord around the appliance. Allow the cord to hang or lie loose and straight at the point of entry into the appliance.

Only store the product in environments ranging from 5°C to 23°C ambient temperature. Failure to comply could result in damage to the product.



FITTING A NEW UK PLUG




Your appliance operates on 220-240V~50Hz AC Mains and comes fitted with a 3-pin BSI Approved plug, so that it is ready for use for the UK or Eire market. If for any reason you need to fit a new plug, the flexible mains lead must be connected as shown below: -

■ IMPORTANT:

The wires in the mains lead are coloured in accordance with the following code:

BLUE:	NEUTRAL (N)
BROWN:	LIVE (L)
GREEN AND YELLOW:	EARTH (E)

As the colours of the wires in the mains lead of this appliance may not correspond with the coloured markings identifying the terminals in your plug, proceed as follows:

The BLUE wire must be connected to the terminal which is marked with the letter "N" or coloured BLACK.
The BROWN wire must be connected to the terminal which is marked with the letter "L" or coloured RED.
The GREEN AND YELLOW wire must be connected to the terminal which is marked with the letter "E", the symbol  or coloured GREEN.

■ DO NOT CONNECT EITHER WIRE 'L' OR 'N' TO THE EARTH TERMINAL OF A 3-PIN PLUG

Always ensure that the Mains Cord is located into the Plug through the Cord Guard or Cable Clamp, and that the Cord Guard screws are tightened to clamp the Cord (outer sheath and inner coloured wires) in position in the Plug. Make sure the Plug top is also fitted securely.

The supply cord cannot be replaced. If the supply cord is damaged, the appliance should be scrapped.

This appliance must be protected by a 7 Amp fuse in a 13 Amp type (BS1363) plug. Should you need to replace the fuse, use only an ASTA approved BS1362 fuse.



WEEE/ENVIRONMENTAL PROTECTION



■ DISPOSAL OF ELECTRICAL AND ELECTRONIC EQUIPMENT

Do not dispose of this product with household waste. For the proper treatment, recovery and recycling please take this product to the appropriate waste collection point. If you are unsure where this may be, please contact your local authority. Improper disposal may be harmful to the environment.



Paul
anthony CUSTOMER SERVICES

If you have any queries about this product then please contact Lloytron Customer Services online at:



www.lloytronhelpdesk.com

To find out more about Paul Anthony products, visit www.lloytron.com



Distributed in UK by Lloytron Ltd, Laltex House, Leigh, England WN7 3XH
Distributed in Europe by Laltex Ireland Ltd, Dublin 2, EIRE, D02 AY86