



---

## OPERATING INSTRUCTIONS

---

# Style Pro Curling Tong



---

**MODEL: H2117**

---

# thank you

Thank you for the purchase of this quality **PAUL ANTHONY** product. Used carefully and in accordance with the instructions enclosed, it should give you trouble free service over a long period of time. Please keep these instructions for future reference.

---

## FEATURES

---

- 25mm diameter curling tong styler
- 135mm long heating barrel
- Cool Touch Tip
- Rubberised Grip Handle
- Quick Heat Up
- 5x Versatile Temperature Control Settings  
120C, 140C, 160C, 180C, 200C
- On/off switch with LED indicators
- Keratin coated plates to reduce hair damage
- 60 minute auto-shut off safety feature
- 360 degree swivel cord
- Rest Stand
- Suits all hair types

---

## SPECIFICATIONS

---

Operating Voltage: 220-240v~50/60Hz

Power Consumption: 60w max.

---

## IMPORTANT SAFEGUARDS AND PRECAUTIONS

---

### SAVE THESE INSTRUCTIONS

- Read all instructions carefully
- For Household Use only. Not intended for commercial use.
- Only for use indoors.
- Do not use outside or in damp conditions.
- Before plugging into mains socket, check whether supply line voltage and current rating are in compliance with the rated electrical parameters shown on the rating label.
- Keep away from hot surfaces, such as gas or electric hobs and ovens etc
- Do not use for any purposes other than the appliances intended use.
- This appliance is not intended to be operated by means of an external timer or separate remote control system.
- To prevent damage to the mains cord, do not let it pass over sharp corners, edges or hot surfaces.
- If the supply cord is damaged, do not use. Check before each use!
- The supply cord cannot be replaced. If the cord is damaged the appliance should be scrapped.
- Do not use if any part of this appliance is damaged in any way.
- Always unplug when not in use.



- To prevent against the risk of electric shock, do not submerge any part of this appliance in water.
- This appliance should only be placed on a flat heat resistant surface.

- This appliance can be used by children aged from 8 years and above and persons with reduced physical, sensory or mental capabilities or lack of experience and knowledge if they have been given supervision or instruction concerning use of the appliance in a safe way and understand the hazards involved.
- Children shall not play with this appliance.
- Cleaning and user maintenance shall not be made by children without supervision.



**WARNING!** Do not use this appliance near bathtubs, showers or other vessels containing water.

- When the appliance is used in a bathroom, unplug it after use since the proximity of water presents a hazard even when the appliance is switched off.
- For additional protection, the installation of a residual current device (RCD) having a rated residual operating current of 30mA is advisable in the electric circuit supplying the bathroom. Ask your installer for advice.
- Should this appliance fall into water, pull the plug out of the wall immediately. Do not place your hand in the water. The appliance should then be checked by a qualified electrician before use again!

#### **DO NOT**

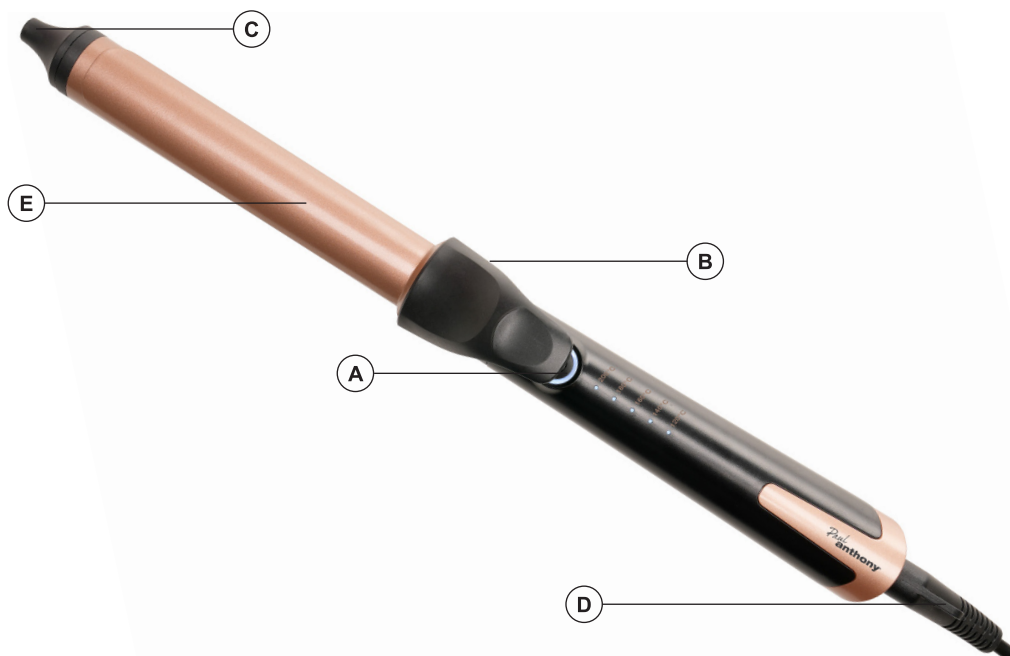
- Do not touch the scalp when using.
- Do not touch the hot surface even when unplugged. It can take 30 minutes to cool down.
- Do not allow the supply cord to come in contact with the heating element during use.
- Do not direct aerosols or water sprays onto the appliance.
- Do not use the appliance with wet hands.
- Do not use with extension lead
- Do not use on artificial hair, wigs or pet hair.
- Do not exceed the recommended application times or singeing or burning of hair may result.
- Do not let the hot plates touch a persons skin when in use.
- Do not rest the styler on non-heat resistant surfaces or near flammable materials whilst in use or cooling down.
- Do not use when sleepy, drowsy or intoxicated
- Do not wrap cord around the appliance.



---

## LOCATION OF CONTROLS

---



**A – On/Off Temperature Switch**

**B – Foot Rest**

**C – Cool Touch Tip**

**D – 360 degree swivel cord**

**E – Ceramic Heating Plate**

---

## KERATIN INFUSED

---

Keratin is a natural type of protein in your skin, hair, and nails. A keratin treatment adds additional keratin to your hair, which can help to reduce frizz, increase shine, and strengthen hair. If you have curly or wavy hair, keratin treatments can also make your hair firmer.



---

# OPERATION

---

1. Plug the unit into the mains socket.
2. Press and hold the ON/OFF button for a few seconds until the power button light is illuminated.
3. The temperature is initially set to the lowest available setting. I.e 120°C.
4. Select your temperature by each press of the On/Off button. An additional LED will illuminate to show the temperature.

The temperature will be:

O	120°C
OO	140°C
OOO	160°C
OOOO	180°C
OOOOO	200°C

5. Wait for 5 minutes to allow the appliance to reach its working temperature.
6. To turn OFF, press and hold the On/OFF button until the power button light extinguishes.

## CAUTION

Although the “Cool Tip” remains cool to the touch, the interface between the “Cool Tip” and the heated barrel does get hot. Take care not to let your fingers slide accidentally towards the heated barrel.

- For those lush, tight curls, wind the hair strands tightly around the barrel, holding the hair in place with the tong clip.
- Roll up about an inch from the scalp, and allow the heat to permeate from the tong barrel to the hair for about 10 to 20 seconds.
- If you have short hair, place a comb close to the scalp to guard against burns.
- For gentler and softer curls, wind the hair a little more loosely around the barrel of the curling tong, roll up to about 3 or 4 inches from the scalp and hold for about 10 seconds.
- Finally, release hair from the tong, by pressing the grasp release clamp, and sliding the tong away from the curled hair.
- Proceed to the next curl.
- When all curls are made, brush out to make the curls loose and bouncy.

When styling, hold the handle in one hand and the safety cool tip in the other. Never wind hair around the tong more than twice.

## ■ HELPFUL HINTS

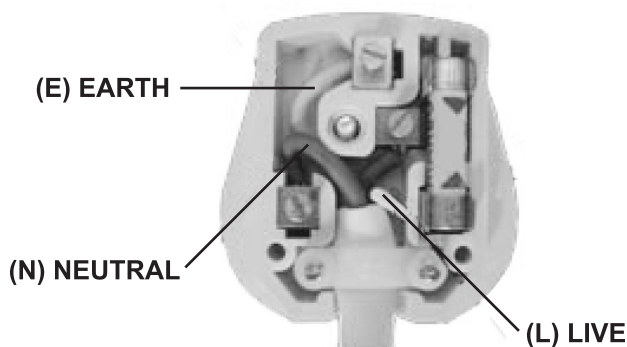
1. To get best results, hair should be clean and dry, and free of all dirt, hair spray, creams, etc.
2. Do not use on artificial hairpieces or wigs as these may melt in the heat generated.
3. Do not use on hair that has been treated with lacquer or setting lotion as this can stick to the barrel, reducing the working efficiency.



---

## FITTING A NEW UK PLUG

---




Your appliance operates on 220-240V~50Hz AC Mains and comes fitted with a 3-pin BSI Approved plug, so that it is ready for use for the UK or Eire market. If for any reason you need to fit a new plug, the flexible mains lead must be connected as shown below: -

### ■ IMPORTANT:

The wires in the mains lead are coloured in accordance with the following code:

BLUE:	NEUTRAL (N)
BROWN:	LIVE (L)
GREEN AND YELLOW:	EARTH (E)

As the colours of the wires in the mains lead of this appliance may not correspond with the coloured markings identifying the terminals in your plug, proceed as follows:

The BLUE wire must be connected to the terminal which is marked with the letter "N" or coloured BLACK.  
The BROWN wire must be connected to the terminal which is marked with the letter "L" or coloured RED.  
The GREEN AND YELLOW wire must be connected to the terminal which is marked with the letter "E", the symbol  or coloured GREEN.

### ■ DO NOT CONNECT EITHER WIRE 'L' OR 'N' TO THE EARTH TERMINAL OF A 3-PIN PLUG

Always ensure that the Mains Cord is located into the Plug through the Cord Guard or Cable Clamp, and that the Cord Guard screws are tightened to clamp the Cord (outer sheath and inner coloured wires) in position in the Plug. Make sure the Plug top is also fitted securely.

The supply cord cannot be replaced. If the supply cord is damaged, the appliance should be scrapped.

This appliance must be protected by a 7 Amp fuse in a 13 Amp type (BS1363) plug. Should you need to replace the fuse, use only an ASTA approved BS1362 fuse.



---

## CLEANING AND CARE

---

### DO NOT

Do not clean or perform any maintenance whilst the appliance is plugged in or warm/hot.

1. Unplug and allow to fully cool.
2. Wipe the heating plates with a damp soft clean lint-free cloth.
3. Allow to dry fully before storage or use.
4. Do not use abrasives, chemicals or solvents to clean this appliance.
5. Do not place in water or use a wet cloth.

### WARNING

Allow the styler to completely cool down for over 30 minutes before storage.

Do not wrap the cord around the styler.

---

## WEEE/ENVIRONMENTAL PROTECTION

---



### ■ DISPOSAL OF ELECTRICAL AND ELECTRONIC EQUIPMENT

Do not dispose of this product with household waste. For the proper treatment, recovery and recycling please take this product to the appropriate waste collection point. If you are unsure where this may be, please contact your local authority. Improper disposal may be harmful to the environment.



---

*Paul*  
**anthony** CUSTOMER SERVICES

---

If you have any queries about this product then please contact Lloytron Customer Services online at:



**[www.lloytronhelpdesk.com](http://www.lloytronhelpdesk.com)**

To find out more about Paul Anthony products, visit [www.lloytron.com](http://www.lloytron.com)



Distributed in UK by Lloytron Ltd, Laltex House, Leigh, England WN7 3XH  
Distributed in Europe by Laltex Ireland Ltd, Dublin 2, D02 AY86