

*Paul*  
**anthony**<sup>™</sup>  
exclusive to  LLOYTRON<sup>®</sup>

**OPERATING INSTRUCTIONS**

**Pro Series T2  
Hair Clippers**



**MODEL: H5121BK**

# thank you

Thank you for the purchase of this quality **LLOYTRON** product. Used carefully and in accordance with the instructions enclosed, it should give you trouble free service over a long period of time. Please keep these instructions for future reference.

## FEATURES

- Corded Mains Operation
- Ergonomic, Easy to Use Design
- High Carbon Stainless Steel Blades
- Adjustable Taper Level
- On/Off Blade Guard
- Powerful, Quiet Motor
- Long 1.6m Cord
- 4 Precise, Interchangeable Sized Comb Guide Attachments
- Set also includes Hairdresser's Comb, Scissors, Lubricating Oil and Cleaning Brush

## LOCATION OF CONTROLS





## IMPORTANT SAFEGUARDS AND PRECAUTIONS



### SAVE THESE INSTRUCTIONS



- **CAUTION:** this appliance is not to be used close to a bathtub, washbasin, or other containers holding water. Danger can arise even when the appliance is switched off, which is why the plug must be pulled out of the socket after it has been used and before it is cleaned. Never pull the plug out of the socket by tugging on the lead!
- If, however, the appliance should fall into water, pull the power plug out of the power socket immediately!
- Never Place your hand in the water!
- Have your appliance checked by a qualified electrician before using it again.
- Ensure that your appliance does not get wet (water splashing, etc.) and do not use with wet hands. If you put your down appliance whilst drying your hair, always switch it off as a precaution.
- Children do not realize the dangers arising from improper use of electrical appliances and therefore should not be allowed to use this appliance without supervision.
- Please read these operating instructions carefully and explain all necessary precautions to your children.
- Always unplug your appliance when not in use and before cleaning it!
- Improper repairs may place the user at serious risk.
- If the supply cord is damaged, then the unit must be scrapped.
- Do not use if any part of this appliance is damaged in any way.

- This appliance can be used by children aged from 8 years and above and persons with reduced physical, sensory or mental capabilities or lack of experience and knowledge if they have been given supervision or instruction concerning use of the appliance in a safe way and understand the hazards involved.
- Children shall not play with this appliance.
- Cleaning and user maintenance shall not be made by children without supervision.



# HOW TO USE

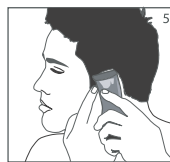
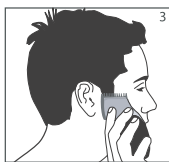
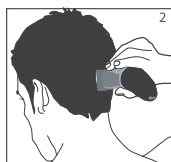
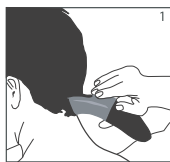
## BEFORE USE:

- 1) Ensure the clipper is plugged into a power socket.
- 2) Inspect clipper and ensure it is free from hair and dirt.
- 3) Attach the correct guide comb attachment for desired hair length.
- 4) Ensure guide comb is attached fully, before cutting any hair.
- 5) Comb hair before cutting, to ensure it is tangle free.
- 6) The clipper is fitted with an adjustable taper lever, which will gradually change the closeness of your cut without changing guide combs.

## REMINDERS:

Cut the hair gradually using short strokes only to work gradually over the entire head. Always take a little hair at a time. You can always trim off additional hair later.

## HOW TO USE:



### STEP 1 - NAPE OF NECK - DIAGRAM 1

- 1) Start upward from nape of neck using a 3mm or 6mm Guide Comb.
- 2) Hold the clipper with the cutting edge pointed up and begin to cut hair. Start at the centre of the head at the base of the neck.
- 3) Hold the clipper lightly against the head with the comb teeth pointing upward. Slowly lift the clipper, working upwards and outwards through the hair, trimming just a little at a time.

### STEP 2 - BACK OF HEAD - DIAGRAM 2

- 1) With the 12mm Guide Comb, cut the hair at back of the head.

### STEP 3 - SIDE OF THE HEAD - DIAGRAM 3

- 1) With the 3mm or 6mm Guide Comb, trim sideburns.
- 2) Then change to longer 9mm Guide Comb to cut side of head.

### STEP 4 - TOP OF HEAD - DIAGRAM 4

- 1) With the 12mm Guide Comb, cut hair at the top of the head against the direction in which the hair naturally grows.
- 2) For longer hair, use without Guide Comb. Lift hair on top of head with a hand comb. Cut over the hand comb with the hair lifted or hold between the fingers and cut of desired length.

### STEP 5 - FINISHING TOUCHES - DIAGRAM 5

- 1) Use the clipper without attachment comb for close trimming around the base and sides of the neck and around the ears.
- 2) To produce clean straight lines at the sideburns, reverse the clipper. Press the clippers at right angles to the head, tip the blades lightly touching the skin and then work downwards.

# CLEANING AND CARE

## **MAINTENANCE**

This appliance has been designed to operate over a long period of time with minimum of maintenance. Continuous satisfactory operation depends upon proper care and regular cleaning.

## **STORAGE**

Always store this appliance and cord in a moisture-free area. Do not wrap the cord of the charging adaptor around the appliance. Do not store in temperatures above 35c.

## **CLEANING**

Remove any hair debris using cleaning brush after each use. Rinse head only under running water and dry thoroughly with towel.

## **DO NOT SUBMERGE UNIT IN WATER OR ANY OTHER LIQUID.**

Use cutter oil or sewing machine oil on blades and operate for 5 seconds.

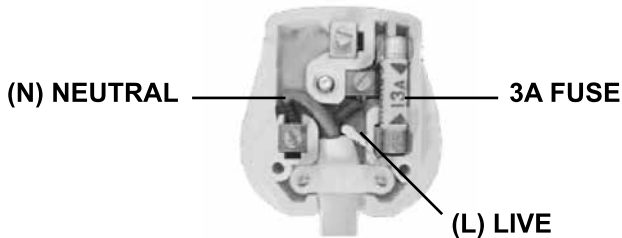
## WEEE/ENVIRONMENTAL PROTECTION



### Disposal of Electrical and Electronic Equipment

Do not dispose of this product with household waste. For the proper treatment, recovery and recycling please take this product to the appropriate waste collection point. If you are unsure where this may be, please contact your local authority. Improper disposal may be harmful to the environment.

## UK PLUG REWIRING



Your appliance operates on 220-240V~50Hz AC Mains and comes fitted with a 3-pin BSI Approved plug, so that it is ready for use by simply plugging into AC Mains. Should you need to change or refit a plug, proceed as follows: -

### IMPORTANT:

The wires in the mains lead are coloured in accordance with the following code:

BLUE:	NEUTRAL (N)
BROWN:	LIVE (L)

As the colours of the wires in the mains lead of this appliance may not correspond with the coloured markings identifying the terminals in your plug, proceed as follows:

The BLUE wire must be connected to the terminal which is marked with the letter "N" or coloured BLACK.

The BROWN wire must be connected to the terminal which is marked with the letter "L" or coloured RED.

### DO NOT CONNECT EITHER WIRE TO THE EARTH TERMINAL OF A 3-PIN PLUG

Always ensure that the Mains Cord is located into the Plug through the Cord Guard or Cable Clamp, and that the Cord Guard screws are tightened to clamp the Cord (outer sheath and inner coloured wires) in position in the Plug. Make sure the Plug top is also fitted securely.

The supply cord cannot be replaced. If the supply cord is damaged, the appliance should be scrapped.

This appliance must be protected by a 3 Amp fuse in a 13 Amp type (BS1363) plug. Should you need to replace the fuse, use only an ASTA approved BS1362 fuse.



## LLOYTRON® CUSTOMER SERVICES

If you have any queries about this product, there are three ways to contact our customer service department:

**call: 08454 81 8808**

**email: [customerservice@lloytron.com](mailto:customerservice@lloytron.com)**

**web: [www.lloytronhelpdesk.com](http://www.lloytronhelpdesk.com)**

To find more details on a wide range of Lloytron products please visit our website at [www.lloytron.com](http://www.lloytron.com)  
Lloytron plc, Laltex House, Leigh Commerce Park, Greenfold Way, Leigh, Lancashire, WN7 3XH. England, U.K