



OPERATING INSTRUCTIONS

Pro Series P200

Professional Hair Clipper



MODEL: H5124

thank you

Thank you for the purchase of this quality **PAUL ANTHONY** product. Used carefully and in accordance with the instructions enclosed, it should give you trouble free service over a long period of time. Please keep these instructions for future reference.

FEATURES

- Corded Mains Operation
- Ergonomic, Easy to Use Design
- Self Sharpening Stainless Steel Blades
- Adjustable Taper Level
- Powerful, Quiet Motor
- Long 1.7m Cord
- 4 Precise, Interchangeable Sized Comb Guide Attachments
- Set also includes Hairdresser's Comb, Scissors, Lubricating Oil and Cleaning Brush


SPECIFICATIONS

Rated Input: 220-240V~ 50/60Hz 10W
Cord Length:1.8m approximately
Dimensions:19 x 6 x 5.5cm (approx.)
Operating Temperature: +5°C to +25°C

IMPORTANT SAFEGUARDS AND PRECAUTIONS

SAVE THESE INSTRUCTIONS

- Read all instructions carefully
- For Household Use only. Not intended for commercial use.
- Only for use indoors.

 **DO NOT**
Do not use outside or in damp conditions.

- Before plugging into mains socket, check whether supply line voltage and current rating are in compliance with the rated electrical parameters shown on the rating label.
- Keep away from hot surfaces, such as gas or electric hobs and ovens etc



DO NOT

Do not use for any purposes other than the appliances intended use.

- This product is not intended to be operated by means of an external timer or separate remote control system.
- To prevent damage to the power cord, do not let it pass over sharp corners, edges or hot surfaces.
- If the power cord is damaged, do not use. Check before each use!
- The supply cord cannot be replaced. If the cord is damaged the appliance should be scrapped.

DO NOT

Do not use if any part of this appliance is damaged in any way.

- Always unplug when not in use.
- To prevent against the risk of electric shock, do not submerge any part of this appliance in water, unless advised in this manual.

- This appliance can be used by children aged from 8 years and above and persons with reduced physical, sensory or mental capabilities or lack of experience and knowledge if they have been given supervision or instruction concerning use of the appliance in a safe way and understand the hazards involved.
- Children shall not play with this appliance.
- Cleaning and user maintenance shall not be made by children without supervision.



WARNING! Do not use this appliance near bathtubs, showers or other vessels containing water.

WARNING

Keep the appliance dry.

- Should this appliance fall into water, pull the plug out of the wall immediately. Do not place your hand in the water. The appliance should then be checked by a qualified electrician before use again!
- When the appliance is used in a bathroom, unplug it after use since the proximity of water presents a hazard even when the appliance is switched off.
- Use, charge and store the appliances at a temperature between 5°C and 35°C



LOCATION OF CONTROLS



A – Self Sharpening Stainless Steel Blades

Ultra sharp blades oscillate rapidly for a smoother cut, whilst continuing to sharpen.

B – On/Off Blade Guard Switch

Switching the blade guard to 'on' protects the skin from being damaged during down-strokes.

C – On/Off Switch

Switching the on/off switch to 'on' operates the motor to activate the blades.

D – Precision Taper Adjustment Lever

This allows users to have greater control over the level of detail within the cutting.

E – Power Cord

Plug the power cord into a suitable 220-240v~50Hz mains supply.

F – Interchangeable comb guide attachments

Nº.1 - 3mm, Nº.2 - 6mm, Nº.3 - 9mm & Nº.4 - 12mm guides for a variety of lengths and styles.

G – Accessories

Includes scissors, barber's comb, lubricating oil and cleaning brush.



OPERATION

BEFORE USE

1 ENSURE the clipper is plugged into a power socket.

2 INSPECT clipper and **ENSURE** it is free from hair and dirt.

3 ATTACH the correct guide comb attachment for desired hair length.

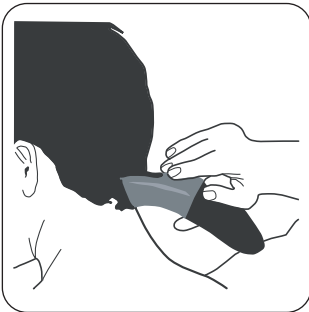
4 ENSURE guide comb is **ATTACHED FULLY**, before cutting any hair.

5 COMB hair before cutting, to **ENSURE** it is tangle free.

6 The clipper is fitted with an adjustable taper lever, which will gradually change the closeness of your cut without changing guide combs.

Note: Cut the hair gradually using short strokes only to work gradually over the entire head. Always take a little hair at a time. You can always trim off additional hair later.

HOW TO USE

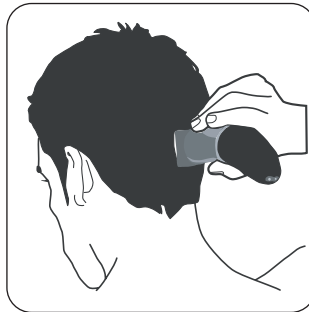


1 NAPE OF NECK

1) Start **UPWARD** from nape of neck using a 3mm or 6mm Guide Comb.

2) **HOLD** the clipper with the cutting edge pointed up and begin to **CUT HAIR**. Start at the centre of the head at the base of the neck.

3) **HOLD** the clipper **LIGHTLY** against the head with the comb teeth pointing **UPWARD**. **SLOWLY LIFT** the clipper, working **UPWARDS** and **OUTWARDS** through the hair, **TRIMMING** just a little at a time.



2 BACK OF HEAD

1) With the 12mm Guide Comb, **CUT** the hair at back of the head.

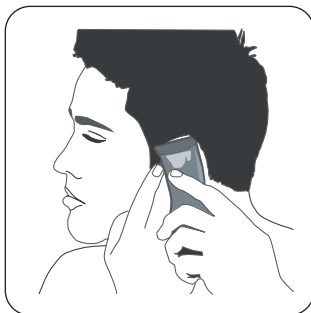


3 SIDE OF THE HEAD

1) With the 3mm or 6mm Guide Comb, **TRIM SIDEBURNS**.

2) Then change to longer 9mm Guide Comb to **CUT SIDE OF HEAD**.





4 TOP OF HEAD

1) With the 12mm Guide Comb, **CUT HAIR** at the top of the head against the direction in which the hair naturally grows.

2) For longer hair, use without Guide Comb. **LIFT HAIR** on top of head with a hand comb. **CUT OVER** the hand comb with the hair lifted or **HOLD** between the fingers and cut of desired length.

5 FINISHING TOUCHES

1) **USE** the clipper **WITHOUT** attachment comb for close trimming around the base and sides of the neck and around the ears.

2) To produce clean straight lines at the sideburns, **REVERSE THE CLIPPER**. Press the clippers at **RIGHT ANGLES** to the head, tip the blades lightly touching the skin and then work **DOWNWARDS**.

CLEANING AND CARE

■ MAINTENANCE

This appliance has been designed to operate over a long period of time with minimum of maintenance. Continuous satisfactory operation depends upon proper care and regular cleaning.

■ STORAGE

Always store this appliance and cord in a moisture-free area. Do not wrap the cord around the appliance. Do not store in temperatures below 5°C or above 35°C.

■ CLEANING

Remove any hair debris using cleaning brush after each use.

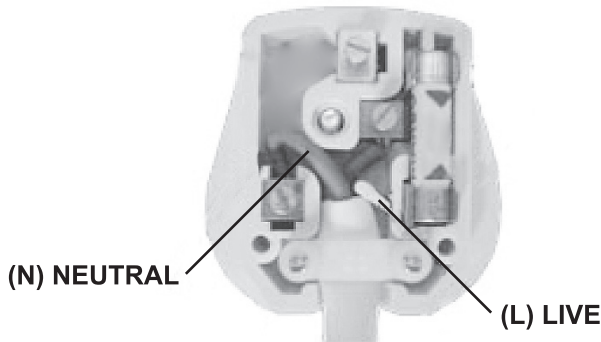
⊘ DO NOT

Do not submerge unit in water or any other liquid.

Use cutter oil or sewing machine oil on blades and operate for 5 seconds.



FITTING A NEW UK PLUG



Your appliance operates on 220-240V~50Hz AC Mains and comes fitted with a 3-pin BSI Approved plug, so that it is ready for use for the UK or Eire market. If for any reason you need to fit a new plug, the flexible mains lead must be connected as shown below: -

■ IMPORTANT:

The wires in the mains lead are coloured in accordance with the following code:

BLUE:	NEUTRAL (N)
BROWN:	LIVE (L)

As the colours of the wires in the mains lead of this appliance may not correspond with the coloured markings identifying the terminals in your plug, proceed as follows:

The BLUE wire must be connected to the terminal which is marked with the letter "N" or coloured BLACK.
The BROWN wire must be connected to the terminal which is marked with the letter "L" or coloured RED.

■ DO NOT CONNECT EITHER WIRE 'L' OR 'N' TO THE EARTH TERMINAL OF A 3-PIN PLUG

Always ensure that the Mains Cord is located into the Plug through the Cord Guard or Cable Clamp, and that the Cord Guard screws are tightened to clamp the Cord (outer sheath and inner coloured wires) in position in the Plug. Make sure the Plug top is also fitted securely.

The supply cord cannot be replaced. If the supply cord is damaged, the appliance should be scrapped.

This appliance must be protected by a 3 Amp fuse in a 13 Amp type (BS1363) plug.
Should you need to replace the fuse, use only an ASTA approved BS1362 fuse.



WEEE/ENVIRONMENTAL PROTECTION



■ DISPOSAL OF ELECTRICAL AND ELECTRONIC EQUIPMENT

Do not dispose of this product with household waste. For the proper treatment, recovery and recycling please take this product to the appropriate waste collection point. If you are unsure where this may be, please contact your local authority. Improper disposal may be harmful to the environment.

Paul
anthony CUSTOMER SERVICES

If you have any queries about this product then please contact Lloytron Customer Services online at:



www.lloytronhelpdesk.com

To find out more about Paul Anthony products, visit www.lloytron.com



Distributed in UK by Lloytron Ltd, Laltex House, Leigh, England. WN7 3XH
Distributed in Europe by Laltex Ireland Ltd, Dublin 2, Eire. D02 AY86