

Paul
anthony[®]

OPERATING INSTRUCTIONS

Perfect Cut

Professional Hair Clipper



MODEL: H5150

thank you

Thank you for the purchase of this quality **PAUL ANTHONY** product. Used carefully and in accordance with the instructions enclosed, it should give you trouble free service over a long period of time. Please keep these instructions for future reference.

FEATURES

- Corded Mains Operation
- Ergonomic, easy to use design
- Ultra Sharp Titanium Steel Blades
- Adjustable Taper Lever
- Powerful and quiet AC Copper Motor
- Cord Length 2.5m
- 10x Comb attachments from 0.5mm to 25mm
- Accessories include comb, scissors, lubricating oil, cleaning brush and speed adjustment key



SPECIFICATIONS

Operating Voltage: 220-240v 50/60Hz

Power: 10w approx

Ambient Operating Temperature: 5°C - 23°C

Note: Do not operate if ambient temperature is outside this range as this may damage the product.



www.lloytronhelpdesk.com

IMPORTANT SAFEGUARDS AND PRECAUTIONS

SAVE THESE INSTRUCTIONS

- Read all instructions carefully
- For Household Use only. Not intended for commercial use.
- Only for use indoors.

DO NOT

Do not use outside or in damp conditions.

- Before plugging into mains socket, check whether supply line voltage and current rating are in compliance with the rated electrical parameters shown on the rating label.
- Keep away from hot surfaces, such as gas or electric hobs and ovens etc

DO NOT

Do not use for any purposes other than the appliances intended use.

- This product is not intended to be operated by means of an external timer or separate remote control system.
- To prevent damage to the power cord, do not let it pass over sharp corners, edges or hot surfaces.
- If the power cord is damaged, do not use. Check before each use!
- The supply cord cannot be replaced. If the cord is damaged the appliance should be scrapped.

DO NOT

Do not use if any part of this appliance is damaged in any way.

- Always unplug when not in use.
- To prevent against the risk of electric shock, do not submerge any part of this appliance in water, unless advised in this manual.



- This appliance can be used by children aged from 8 years and above and persons with reduced physical, sensory or mental capabilities or lack of experience and knowledge if they have been given supervision or instruction concerning use of the appliance in a safe way and understand the hazards involved.
- Children shall not play with this appliance.
- Cleaning and user maintenance shall not be made by children without supervision.



WARNING! Do not use this appliance near bathtubs, showers or other vessels containing water.

 **WARNING**

Keep the appliance dry.

- Should this appliance fall into water, pull the plug out of the wall immediately. Do not place your hand in the water. The appliance should then be checked by a qualified electrician before use again!
- When the appliance is used in a bathroom, unplug it after use since the proximity of water presents a hazard even when the appliance is switched off.
- Use, charge and store the appliances at a temperature between 5°C and 35°C



LOCATION OF CONTROLS



A – Titanium Steel Blades

Ultra sharp blades oscillate rapidly for an smoother cut while remaining sharp at all times.

B – On/Off Switch

Switching the on/off switch to 'on' operates the motor to activate the blades.

C – Precision Taper Adjustment Lever

This allows users to have greater control over the level of detail within the cutting.

D – Power Cord

Plug the power cord into a suitable 220-240v~50Hz mains supply.

E – Power Screw/Speed Adjustment

Adjust noise and efficiency if voltage/frequency too low.

F – 10x Interchangeable comb guide attachments

0.5mm to 25mm guides for a variety of styles.
#A – 0.5mm, #B - 1.5mm, #1 – 3mm, #2 – 6mm,
#3 – 9mm, #4 – 12mm, #5 – 15mm,
#6 – 18mm, #7 – 21mm, #8 – 25mm

G – Accessories

Includes Speed adjustment key, scissors, barber's comb, lubricating oil and cleaning brush.



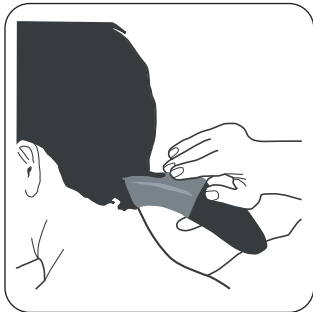
OPERATION

■ BEFORE USE

1. Ensure the clipper is plugged into a power socket.
2. Inspect clipper and ensure it is free from hair and dirt.
3. Attach the correct guide comb attachment for desired hair length.
4. Ensure guide comb is attached fully, before cutting any hair.
5. Comb hair before cutting, to ensure it is tangle free.
6. The clipper is fitted with an adjustable taper lever, which will gradually change the closeness of your cut without changing guide combs.

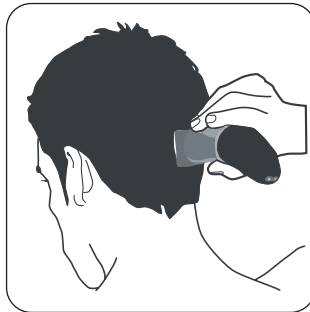
Note: Cut the hair gradually using short strokes only to work gradually over the entire head. Always take a little hair at a time. You can always trim off additional hair later.

■ HOW TO USE



1. NAPE OF NECK

- 1) Start upwards from nape of neck using a 3mm or 6mm Guide Comb.
- 2) Hold the clipper with the cutting edge pointed up and begin to cut hair. Start at the centre of the head at the base of the neck.
- 3) Hold the clipper lightly against the head with the comb teeth pointing upward. Slowly lift the clipper, working upwards and outwards through the hair, trimming just a little at a time.



2. BACK OF HEAD

- 1) With the 12mm Guide Comb, cut the hair at back of the head.



3. SIDE OF THE HEAD

- 1) With the 3mm or 6mm Guide Comb, trim sideburns.
- 2) Then change to longer 9mm Guide Comb to cut side of head.





4. TOP OF HEAD

1) With the 12mm Guide Comb, cut hair at the top of the head against the direction in which the hair naturally grows.

2) For longer hair, use without Guide Comb. Lift hair on top of head with a hand comb. Cut over the hand comb with the hair lifted or hold between the fingers and cut of desired length.

5. FINISHING TOUCHES

1) Use the clipper without attachment comb for close trimming around the base and sides of the neck and around the ears.

2) To produce clean straight lines at the sideburns, reverse the clipper. Press the clippers at right angles to the head, tip the blades lightly touching the skin and then work downwards.

■ TAPER LEVER

The taper lever adds additional versatility to your clipper that allows you to gradually change the closeness of your cut without the use of a guide comb.

When the lever is in the uppermost position, the blades will give you closest cut and leave the hair very short. Pushing the lever downward gradually increases the cutting length.

In its lowest position, the taper lever will leave the hair approximately the same length as the #1 comb. The taper lever will also extend the use of your blades since a different cutting edge is used in each setting. In addition, if extremely heavy haircutting has jammed the blades, it will help you remove hair that has become wedged between two blades without removing the blades.

While the clipper is running, rapidly move the lever from close cut to longer cut a couple of times. Doing this each time you've finished using your clipper will help keep the blades clear of cut hair.



CLEANING AND CARE

■ MAINTENANCE

Your Hair Clipper has been designed to operate over a long period of time with minimum of maintenance. Continuous satisfactory operation depends upon proper care and regular cleaning.

■ STORAGE

Always store this Hair Clipper in a moisture-free area. Ideally use the storage case supplied.

⊘ DO NOT

Do not store in temperatures below 5C or above 35C.

■ CLEANING

Unplug the Clipper before cleaning. Remove any Hair Debris from the Clipper after every use using the supplied cleaning brush.

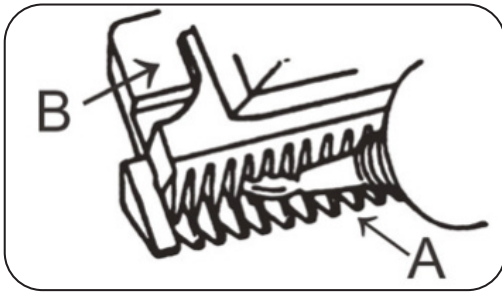
⊘ DO NOT

Do not rinse under the tap.

After cleaning oil the blades.

■ OILING BLADES

The blades of your new clipper should be oiled after every haircut. Simply place a few drops of Oil on the blades at points A and B.



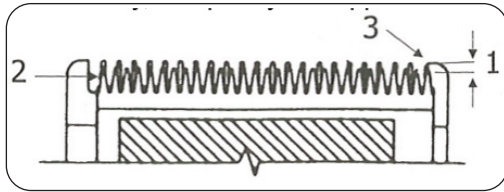
Switch the trimmer on briefly (approx 10 seconds) to ensure the oil film is evenly distributed. Use only the Oil included in the pack. Due to the high speed of your Clipper, the correct type of oil must be used. Do not use hair oil, grease or any oil mixed with kerosene or any solvent, as the solvent will evaporate and leave the thick oil, slowing down the blades.

Note: Do not over oil! Excessive oiling or application of liquids will cause damage if allowed to seep back into the motor.



■ BLADE RE-ALIGNMENT

Your Hair Clipper Blades were oiled and aligned before leaving our factory; however it is possible for the blades to get bumped out of alignment. Blades must be re-aligned if they have been removed for cleaning or replacement. To determine if realignment is necessary, compare your clipper blades with this diagram.



- 1.** End of top blade teeth should be between 0.64mm to 1.27mm back from bottom blade. This is important so that the clipper does not cut too close or allow the moving cutter to touch the skin.
- 2.** Extreme left hand tooth of top blade must be covering or to the left of the first small tooth of the bottom blade.
- 3.** Extreme right hand tooth of top blade must be touching the big tooth on the bottom blade. If blade alignment is incorrect, add a few drops of oil to the blades, turn clipper on for a few moments, turn off and unplug. Loosen screws slightly and adjust. Tighten screws after blade is aligned.

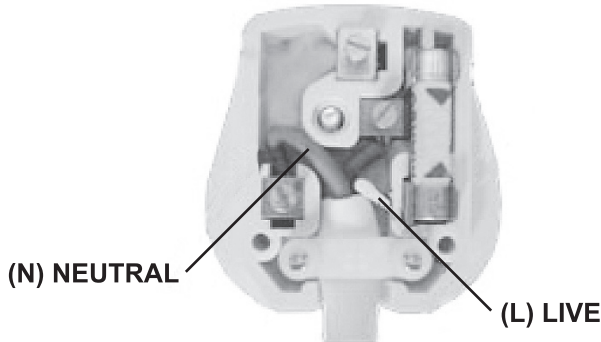
■ POWER SCREW

Your clipper has a power screw; it has been adjusted for peak efficiency before leaving the factory. However, if voltage in your home is low, you may need to readjust it.

To adjust power, use the Speed Key supplied or a screwdriver to turn the power screw in a clockwise direction until the arm strikes the coil making a noise. Then slowly turn the power screw out (counter clockwise), just until noise stops. Then about a quarter turn more, this is the maximum power setting.



FITTING A NEW UK PLUG



Your appliance operates on 220-240V~50Hz AC Mains and comes fitted with a 3-pin BSI Approved plug, so that it is ready for use for the UK or Eire market. If for any reason you need to fit a new plug, the flexible mains lead must be connected as shown below: -

■ IMPORTANT:

The wires in the mains lead are coloured in accordance with the following code:

BLUE:	NEUTRAL (N)
BROWN:	LIVE (L)

As the colours of the wires in the mains lead of this appliance may not correspond with the coloured markings identifying the terminals in your plug, proceed as follows:

The BLUE wire must be connected to the terminal which is marked with the letter "N" or coloured BLACK. The BROWN wire must be connected to the terminal which is marked with the letter "L" or coloured RED.

■ DO NOT CONNECT EITHER WIRE 'L' OR 'N' TO THE EARTH TERMINAL OF A 3-PIN PLUG

Always ensure that the Mains Cord is located into the Plug through the Cord Guard or Cable Clamp, and that the Cord Guard screws are tightened to clamp the Cord (outer sheath and inner coloured wires) in position in the Plug. Make sure the Plug top is also fitted securely.

The supply cord cannot be replaced. If the supply cord is damaged, the appliance should be scrapped.

This appliance must be protected by a 3 Amp fuse in a 13 Amp type (BS1363) plug. Should you need to replace the fuse, use only an ASTA approved BS1362 fuse.

WEEE/ENVIRONMENTAL PROTECTION



■ DISPOSAL OF ELECTRICAL AND ELECTRONIC EQUIPMENT

Do not dispose of this product with household waste. For the proper treatment, recovery and recycling please take this product to the appropriate waste collection point. If you are unsure where this may be, please contact your local authority. Improper disposal may be harmful to the environment.



Paul
anthony CUSTOMER SERVICES

If you have any queries about this product then please contact Lloytron Customer Services online at:



www.lloytronhelpdesk.com

To find out more about Paul Anthony products, visit www.lloytron.com



Distributed in UK by Lloytron Plc, Laltex House, Leigh, England WN7 3XH
Distributed in Europe by Laltex Ireland Ltd, Dublin 2, D02 AY86