



## OPERATING INSTRUCTIONS

# Guardian-Rho Swing-Arm Reading Lamp



MODEL: L5210

# thank you

Thank you for the purchase of this quality **LLOYTRON** product. Used carefully and in accordance with the instructions enclosed, it should give you trouble free service over a long period of time. Please keep these instructions for future reference.

## FEATURES

- Versatile Pivoting & Swivelling Head
- Bulb: E27 28w Max. Halogen GLS or 8w Energy Saver (Bulb Not Included.)
- In-line On/Off Switch
- Weighted Polished Chrome Base
- Max Height: 160cm (Approx.)



## IMPORTANT SAFEGUARDS AND PRECAUTIONS



### SAVE THESE INSTRUCTIONS

- Read all instructions carefully and keep for future reference.
- For Household Use only. Not intended for commercial use.
- Only for use indoors. Do not use outside or in damp / wet conditions or in bathrooms
- Before plugging into mains socket, check whether supply line voltage and current rating are in compliance with the rated electrical parameters shown on the rating label.
- Do not use for any purposes other than the appliances intended use.
- This Lamp is not intended to be operated by means of an external timer or separate remote control system.
- To prevent damage to the mains cord, do not let it pass over sharp corners, edges or hot surfaces.
- The supply cord cannot be replaced. If the cord is damaged the appliance should be scrapped.
- Do not use this Lamp if damaged.
- Any plastic protective cover on the shade must be removed prior to use.
- Always unplug when not in use.

- To prevent against the risk of electric shock, Do not submerge any part of the appliance in water.
- This lamp should only be used on a flat surface.
- This lamp is not intended for use by persons with reduced physical, sensory or mental capabilities, or lack of experience and knowledge, unless they have been given supervision or instruction concerning use of the appliance, by a person responsible for their safety.
- Children should be supervised to ensure they do not play with this Lamp.
- Cleaning and user maintenance shall not be made by children.
- Do not use a bulb of lower voltage than that rated.
- When using low energy bulbs, always ensure the highest equivalent wattage is less than that recommended.
- Should you need to replace a bulb, allow sufficient time for the bulb and lampshade assembly to cool before proceeding to do so.
- Never touch the bare bulb with your bare fingers or hands.
- Grease or oil from fingers can damage the bulb and cause the bulb to burn out, or drastically reduce its operating life.
- Instead, always use a soft cloth or facial tissue when handling the bulb.
- If grease or dirt is seen to get onto the bulb, carefully wipe clean with a lint-free cloth moistened with methylated spirit whilst the lamp is unplugged.

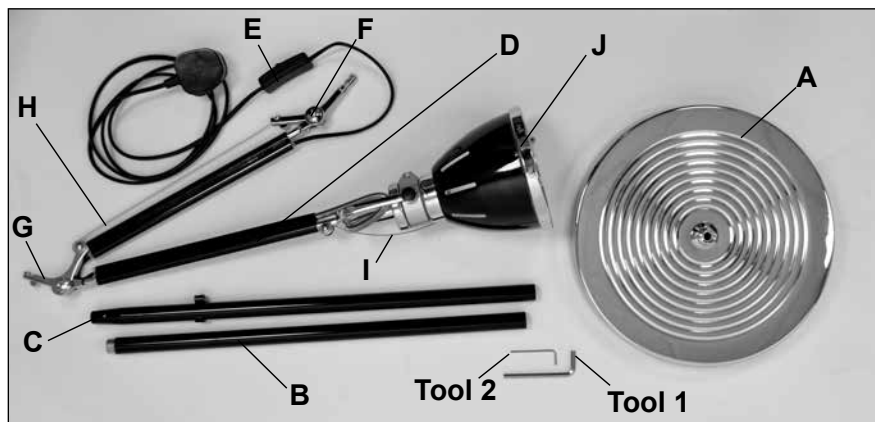
#### MINIMUM DISTANCES – LAMP TO OTHER SURFACES

The minimum distance from any object when illuminated should be as stated in Fig 2 below:



FIG 2

### PARTS DESCRIPTION



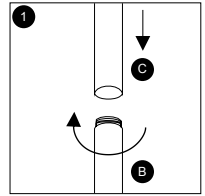
**A** – Base  
**B** – Lower Stand  
**C** – Upper Stand  
**D** – Adjustable Neck

**E** – On/Off Switch  
**F** – Lower Neck Hinge  
**G** – Upper Neck Hinge  
**H** – Lower Neck Wire

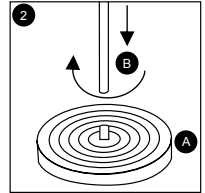
**I** – Upper Neck Wire  
**J** – Adjustable Head  
**Tool 1** – Large Allen Key  
**Tool 2** – Small Allen Key

## ASSEMBLY

- 1** **Attach** Part **B** to Part **C** by **screwing** the 2 pieces together as shown to create the full length of the stand.



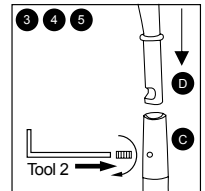
- 2** **Screw** the bottom of the stand to the Part **A**, ensuring that the pointed end of the stand is facing upright



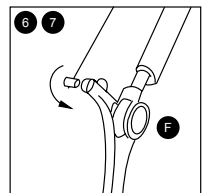
- 3** Using Tool 2, **unscrew** the Allen bolt fixture (located on the side of the stand close to the tip of the point), taking care not to remove it fully from the stand.

- 4** **Insert** the bottom part of Part **D** into the hole at the top of the stand

- 5** Using the Tool 2, carefully **tighten** the Allen bolt fixture back into place to hold Part **D** securely into place



- 6** **Pull** Part **H** tightly and **insert** the cable-stop into the slot on the back of Part **F** as shown



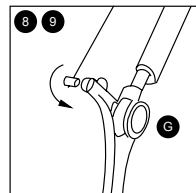
- 7** Using the Tool 1, **tighten** up the Allen bolt on Part **F** once you have set it to the required position

8

**Pull** Part I tightly and **insert** the cable-stop into the slot on the back of Part G as shown

9

Using the Tool 1, **tighten** up the Allen bolt on Part G once you have set it to the required position



10

**Adjust** the Angle of Part J to your requirement and screw in one E27 28w Max. Halogen GLS Bulb or 8w Energy Saver Bulb (Bulb Not Included)

## OPERATION

- **Adjust** the neck and head to the required position. Take care not to strain the neck with too much force, as this could cause damage to the lamp.
- **Screw** in one E27 28w Max. Halogen GLS Bulb or 8w Energy Saver Bulb.
- **Operate** the Lamp using the in-line On/Off switch.

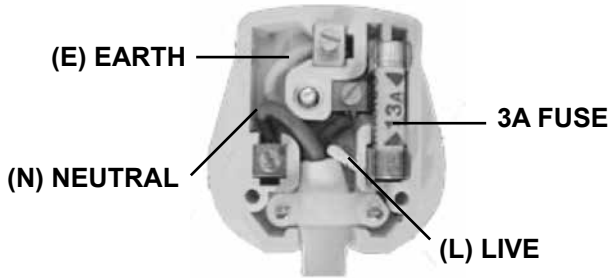


## SPECIFICATIONS

Operating Voltage: 220-240v~50Hz

Bulb: E27 28w Max. Halogen GLS or 8w Energy Saver (Bulb Not Included)

## UK PLUG REWIRING




Your appliance operates on 220-240V~50Hz AC Mains and comes fitted with a 3-pin BSI Approved plug, so that it is ready for use by simply plugging into AC Mains. Should you need to change or refit a plug, proceed as follows: -

### IMPORTANT:

The wires in the mains lead are coloured in accordance with the following code:

BLUE:	NEUTRAL (N)
BROWN:	LIVE (L)
GREEN AND YELLOW:	EARTH (E)

As the colours of the wires in the mains lead of this appliance may not correspond with the coloured markings identifying the terminals in your plug, proceed as follows:

The BLUE wire must be connected to the terminal which is marked with the letter "N" or coloured BLACK.  
The BROWN wire must be connected to the terminal which is marked with the letter "L" or coloured RED.  
The GREEN AND YELLOW wire must be connected to the terminal which is marked with the letter "E", the symbol  or coloured GREEN.

### DO NOT CONNECT EITHER WIRE TO THE EARTH TERMINAL OF A 3-PIN PLUG

Always ensure that the Mains Cord is located into the Plug through the Cord Guard or Cable Clamp, and that the Cord Guard screws are tightened to clamp the Cord (outer sheath and inner coloured wires) in position in the Plug. Make sure the Plug top is also fitted securely.

The supply cord cannot be replaced. If the supply cord is damaged, the appliance should be scrapped.

This appliance must be protected by a 3 Amp fuse in a 13 Amp type (BS1363) plug.  
Should you need to replace the fuse, use only an ASTA approved BS1362 fuse.

## WEEE/ENVIRONMENTAL PROTECTION



### Disposal of Electrical and Electronic Equipment

Do not dispose of this product with household waste. For the proper treatment, recovery and recycling please take this product to the appropriate waste collection point. If you are unsure where this may be, please contact your local authority. Improper disposal may be harmful to the environment.



## LLOYTRON® CUSTOMER SERVICES

If you have any queries about this product, there are three ways to contact our customer service department:

**call: 08454 81 8808**

**email: [customerservice@lloytron.com](mailto:customerservice@lloytron.com)**

**web: [www.lloytronhelpdesk.com](http://www.lloytronhelpdesk.com)**

To find more details on a wide range of Lloytron products please visit our website at **[www.lloytron.com](http://www.lloytron.com)**  
Lloytron plc, Laltex House, Leigh Commerce Park, Greenfold Way, Leigh, Lancashire, WN7 3XH. England, U.K