



OPERATING INSTRUCTIONS

DAB+/FM Portable Stereo Radio



MODEL: N5401

thank you

Thank you for the purchase of this quality **LLOYTRON** product. Used carefully and in accordance with the instructions enclosed, it should give you trouble free service over a long period of time. Please keep these instructions for future reference.

FEATURES

- Wavebands: FM or DAB+
- Listen to your favourite digital radio stations with DAB+
- Digital LCD Screen
- Connect using Bluetooth 4.2 to stream music from phone or music providers
- MP3 music playback using USB or SD card
- Full Bluetooth and MP3 control allows playback, pause, next song, previous song
- AUX input for external device input
- Headphone socket
- Alarm Clock, wake to FM, DAB or Buzzer
- RMS Output: 2x2w
- Battery Source: 4x C sized batteries (not supplied)
- Low power DC Adaptor Operated: 5v DC 1000mA

SPECIFICATIONS

■ GENERAL

Power Requirement.....DC 6V 1A
Battery Requirement.....UM-2 / C x 4pcs
Dimensions.....Approx.215mmx60mmx155mm
Operation temperature...+5°C - +35°C

■ RECEIVER SECTION

Receiving Bands.....FM
Tuning Range.....FM: 87.5-108MHz
FM Radio presets.....20

■ AUDIO SECTION

Output Power.....Maximum 2 Watt x 2
Headphone Impedance....4 ~ 32 Ohms

IMPORTANT SAFEGUARDS AND PRECAUTIONS

SAVE THESE INSTRUCTIONS

- Read all instructions carefully
- For Household Use only.
- Only for use indoors.
- Keep away from hot surfaces, such as gas or electric hobs and ovens etc
- To prevent against the risk of electric shock, do not submerge any part of this appliance in water, unless advised in this manual.



⊘ DO NOT

Do not use in damp or wet conditions.

⊘ DO NOT

Do not use for any purposes other than the appliances intended use.

⊘ DO NOT

Do not use if any part of this appliance is damaged in any way.

- This appliance should only be used on a flat surface.
- This appliance is not intended for use by persons with reduced physical, sensory or mental capabilities, or lack of experience and knowledge, unless they have been given supervision or instruction concerning use of the appliance, by a person responsible for their safety.



To prevent possible hearing damage, do not listen at high volume levels for long periods.

- Children should be supervised to ensure they do not play with this appliance.
- Cleaning and user maintenance shall not be made by children.
- Never let children push anything into holes or slots in the cabinet or casing – this could result in an electric shock.
- Before plugging into mains socket, check whether supply line voltage and current rating are in compliance with the rated electrical parameters shown on the rating label.
- To prevent damage to the adaptor cord, do not let it pass over sharp corners, edges or hot surfaces.
- If the adaptor supplied is damaged, do not use. Check before each use!
- Always unplug from wall when not in use.

⊘ DO NOT

Do not use rechargeable batteries in this appliance.

⊘ DO NOT

Do not mix old and new batteries, different types of batteries, alkaline or heavy duty batteries with different capacity together – they may leak.

- Always turn the unit off, when not in use. Leaving it on will shorten the life of the batteries.
- If you plan not to use the unit for a length of time, remove the batteries. Old batteries can leak and cause corrosion, damaging the unit.
- Should you find the sensitivity or quality of sound deteriorating, replace all old batteries with new ones as soon as possible.
- The use of long life alkaline batteries is recommended.
- DON'T throw the battery in fire or dispose of in household waste. Consult your local authority in the correct way to dispose of unwanted batteries.
- DON'T short-circuit the supply terminals of the batteries.
- Always check the correct polarity when inserting batteries. Incorrect polarity can damage this unit.



LOCATION OF CONTROLS



FRONT, SIDE & REAR VIEW

A. FM Volume

B. DAB + FM Antenna

C. Battery Compartment

D. Power Socket

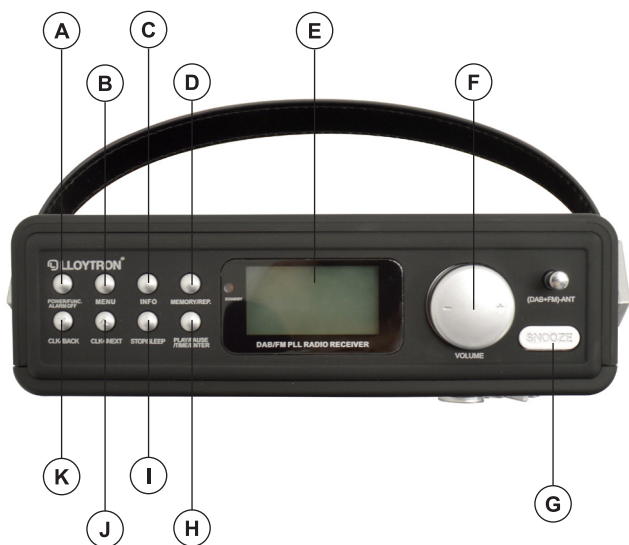
E. SD Card Slot

F. USB Port

G. Headphone Jack

H. AUX IN Jack





CONTROL PANEL

A. Power/Func/Alarm Off

B. Menu

C. Info

D. Memory/Repeat

E. LED Display

F. Volume Button

G. Snooze

H. Play/Pause/Time/Enter

I. Stop/Sleep

J. CLK + / Next

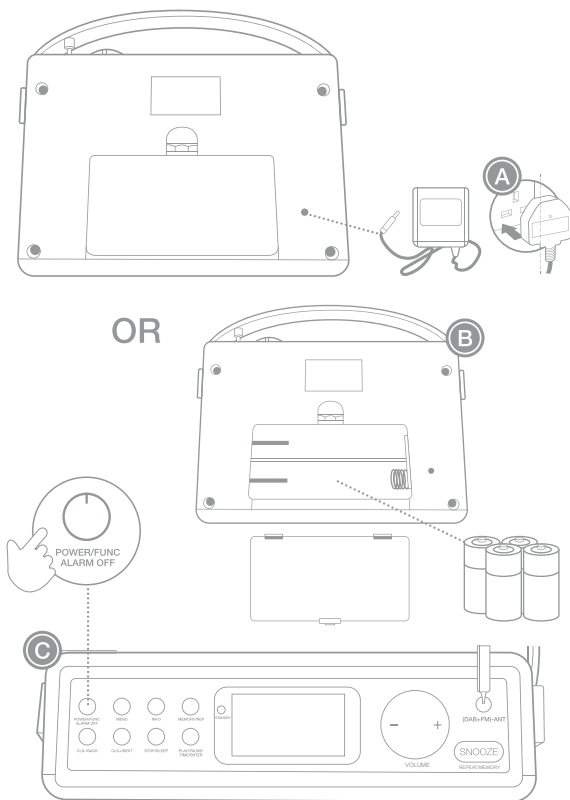
K. CLK - / Back

	BUTTON	FUNCTION
A	POWER FUNCTION ALARM OFF	In standby mode, press to turn radio on. Press to change modes between DAB/FM/BT/USB/SD/AUX modes. Press to turn alarm off when it sounds.
B	MENU	Press to Select menu settings.
C	INFO	Press for information.
D	MEMORY/REP	Press to store radio station. Press to repeat a track on USB or SD mode.
E	LED DISPLAY	
F	VOLUME +/-	Press the VOL +/- button to adjust the volume.
G	SNOOZE	Press to snooze alarm.
H	PLAY/PAUSE TIME ENTER	Press to play and pause playback. Press to enter clock setting and alarm setting modes. Press to confirm a selection.
I	STOP/SLEEP	Press to stop playback Press and hold to enter sleep mode
J	CLK +/-NEXT	Press to go forward when setting the time. Press to skip forward on USB/SD modes. Press to scan forward in radio mode.
K	CLK-/BACK	Press to go back when setting the time. Press to skip back on USB/SD modes. Press to scan backward in radio mode.



QUICK SETUP

■ GETTING STARTED



POWERING ON

The radio can be powered from batteries or using an adaptor.
Press the power button to turn on.

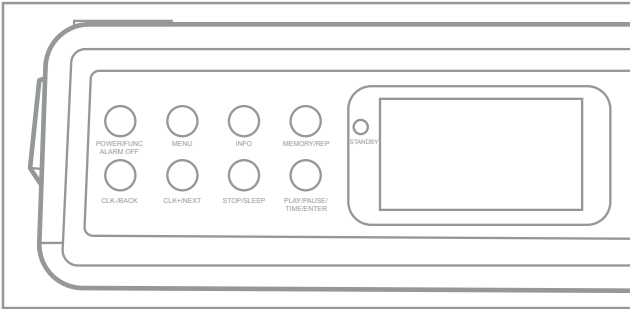
■ BATTERIES

Open the battery compartment located at the back of the radio and place 4 x 1.5V / C batteries making sure that they are the correct way round. Close the battery compartment.

■ POWER ADAPTOR

Insert one end of the power adaptor into the DC jack on the back of the radio. Plug the other end of the adaptor in at the mains and turn it on. To switch off completely, unplug the power cord from the wall outlet.

FEATURES



■ DAB RADIO

1. Press the **FUNCTION** button until DAB shows on the display.
2. Press and hold **ENTER** to automatically scan all available channels and automatically store each station found in memory.
3. Once the scan is complete, you can choose from available stations.
4. Press the **NEXT** or **BACK** button to search through the station list, and press **ENTER** to select station.

■ FM RADIO

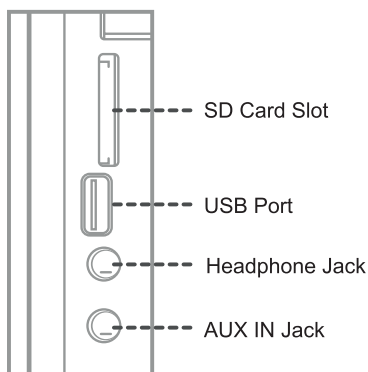
1. Press the **FUNCTION** button until FM shows on the display.
2. Extend the antenna fully.
 - Press **NEXT** or **BACK** to manually move through radio frequencies.
 - Press and hold **NEXT** or **BACK** to automatically scan through frequencies to next available radio station. These are not sorted.
 - Press and hold **ENTER** to automatically scan all radio frequencies and automatically store each station found in memory.



■ RADIO PRE-SET TUNING

A maximum of 20 radio stations can be stored.

1. Select the radio station you wish to store.
2. Press the **MEMORY** button.
3. The screen will show 'Preset Store'. Use the **BACK** and **NEXT** buttons to select a preset number to store the station.
4. Press **ENTER** to store the station.
5. Repeat the above steps to store more radio stations.



■ AUX-IN

1. Connect an aux cable (not included) to the Aux-in Jack of the Radio. Connect the other end of your external device.
2. Press the function button to select AUX mode.
3. Select and play songs from your external device. The sound will be played through the speakers of the radio.
4. Press the VOL +/- button to adjust volume.

■ USB STICK OR SD CARD

The USB or SD card must be formatted in FAT32 or EXFAT and the music stored in MP3 format.

1. Insert your USB or SD card into the corresponding port/slot on the Radio.
2. Press the **FUNCTION** button to select the corresponding USB or SD mode.
3. The music will automatically start to play.
4. Use the buttons on the radio to control playback.



■ BT BLUETOOTH

1. Press the **FUNCTION** button until BT shows on the display.
2. Search for new Bluetooth devices on your smartphone device.
3. Select 'DAB RADIO' on your smart device and click to connect.
4. A beep will be heard when connected.
5. You can now play the music from your smartphone.

■ ALARM

This radio has two alarm settings that can be used simultaneously. You have a choice of wake by buzzer, FM radio or DAB radio.

1. Turn the radio unit on, so not in stand by mode.
2. Press **MENU** button and then press enter
3. Now press **NEXT** twice until you see "Alarms" and press **ENTER**.
4. To set Alarm 1, press **ENTER**. To set Alarm 2, Press **NEXT** and then **ENTER**.
5. Select the time on for the alarm to start. Press **BACK** and **NEXT** to select the hour.
6. Press **ENTER** button to confirm.
7. Press **BACK** and **NEXT** to select the minutes and press **ENTER** to confirm.
8. Select the time **OFF** for the alarm to stop. Press **BACK** and **NEXT** to select the hour.
9. Press **ENTER** button to confirm.
10. Press **BACK** and **NEXT** to select the minutes and press **ENTER** to confirm.
11. The display will now show 'Buzzer'. Use the **BACK** and **NEXT** buttons to select the alarm mode. Choose between BUZZER/FM/DAB. Press **ENTER** to confirm.
12. The display will now show 'Once'. Use the **BACK** and **NEXT** buttons to select the frequency. Choose between Once/Daily/Weekends/Weekdays. Press **ENTER** to confirm.
13. The display will now show the date '01/01/2000'. Use the **BACK** and **NEXT** buttons to scroll through date/month/year if the alarm is only to be activated on a specific date. Press **ENTER** to confirm each selection.
14. The screen will now show volume as 15 bars. The default alarm volume is 15. Use the **BACK** and **NEXT** buttons to change the volume level. Press **ENTER** to confirm.
15. The alarm will sound at the set time.



■ SNOOZE

When alarm sounds.

1. Press **SNOOZE** to snooze the alarm for 9 minutes. You can snooze the alarm five times.
2. To cancel the alarm, hold the **ALARM OFF** button.

■ TIME/DATE

1. Put the radio into Standby.
2. Press the **ENTER** button. The time will flash on the display.
3. Press **NEXT** and **BACK** to select the hour and then the minutes.
4. Press the **ENTER** button to confirm.
5. Then select the desired date and press enter at each stage of the date.

■ REPEAT

1. On USB or SD mode, select the song you wish to repeat.
2. Press **MEMORY** once and the display will show REP1. The selected song will be repeated.
3. Press **MEMORY** again and the display will show 'ALL'. All songs will play.

■ STANDBY

The radio will switch to standby mode if it is left idle on the Aux or USB/SD modes for over 10 minutes. Press and hold the **POWER** button to switch to standby mode.



■ INFO

Pressing the **INFO** button provides information based on the mode of operation.

DAB MODE, press **INFO** shows the following information.

- DLS (Dynamic Link Segment): displays rolling text which may show the artist, track name, program details etc.
- Signal Strength: displays the signal strength of the current station.
- Program Type: displays the type of station content being broadcast.
- Ensemble name: displays the name of the multiplex to which the current DAB station belongs.
- Frequency and Channel: displays the current channel and frequency.
- Signal Error
- Bitrate and Audio Status: displays the data rate in kilo bites per second and the audio mode.
- Time: displays the current time.
- Date: displays the current date.

FM RADIO MODE, press **INFO** shows the following information.

- PTY (Program Type): displays the type of station content being broadcast.
- Station Name: if available
- Stereo or Mono:
- Time: displays the current time.
- Date: displays the current date.
- Radio text: displays rolling text which may show the artist, track name, program details etc.
- Frequency/Signal Strength: displays the frequency and signal strength of the current station.

ALL OTHER MODES, Press **INFO** for the following Information.

- Time: displays the current time.
- Date: displays the current date.



MENU

You can access the System Menu in any of the following modes, BT/SD/USB/AUX.

Use **BACK** or **NEXT** to scroll through the menus and use **ENTER** to select and confirm the settings.

• SYSTEM			
• SLEEP	Select		15 – 30 – 45 – 60 – 90 – OFF
• TIME	Select SET TIME		Select Auto update on/off Select 12/24 hour Select Date Format Select Set Time/Date
• ALARMS	Select Alarm1	Select SET	On Time Off Time Source (Buzzer/FM/DAB) Once/Daily/Weekends/Weekdays Date Volume Off Save
	Select Alarm2	Select SET	On Time Off Time Source (Buzzer/FM/DAB) Once/Daily/Weekends/Weekdays Date Volume Off Save
• BACK LIGHT LEVEL	Select Low/Medium/High		
• AUTO BACK LIGHT	Select On/Off		
• LANGUAGE	Select English/German/Italian/French/Portuguese		
• FACTORY RESET	Select Yes/No		
• SW VERSION	Shows Firmware version		



TROUBLESHOOTING

No sound / power	Volume turned down.	Adjust the volume using volume dial.
	Power cord not securely connected.	Reconnect the power cord.
	Batteries dead/incorrectly inserted.	Remove the batteries and re-insert. If it still does not work, insert fresh batteries.
No radio signal	Antenna not adjusted/no frequency.	When listening to FM radio, ensure the antenna is fully adjusted. Use the tuning dial to adjust the radio frequency.



CLEANING AND CARE

■ MAINTENANCE

This appliance has been designed to operate over a long period of time with a minimum of maintenance. Continuous satisfactory operation depends upon proper care and regular cleaning.

■ CLEANING

The exterior surface of the appliance should be wiped with a clean dry cloth only.

DO NOT

Do not use abrasive cleaners, solvents or polish on any part of this appliance.

■ PRECAUTIONS AND GENERAL MAINTENANCE

- Place the set on a hard and flat surface so that the system does not tilt.
- Do not expose the set or batteries to humidity, rain, sand or excessive heat caused by heating equipment or direct sunlight.
- Do not cover the set. Allow adequate ventilation with a minimum gap of 15cm between the ventilation holes and surrounding surfaces. Do not place on large pile carpets or restrict flow of air underneath the set.



WEEE/ENVIRONMENTAL PROTECTION



■ DISPOSAL OF ELECTRICAL AND ELECTRONIC EQUIPMENT

Do not dispose of this product with household waste. For the proper treatment, recovery and recycling please take this product to the appropriate waste collection point. If you are unsure where this may be, please contact your local authority. Improper disposal may be harmful to the environment.



■ PRODUCT END OF LIFE AND BATTERY DISPOSAL

The battery contains substances that may pollute the environment. At end of life for the product, always remove the battery and separate before you discard the product at your local waste collection point. Both battery and product should be disposed separately.

If you have trouble removing the battery, then you should contact a qualified technician or authorised service centre.

Contact your local authority for details and locations of official waste collection points. Do not dispose of batteries or product with normal household waste.



LLOYTRON® CUSTOMER SERVICES

If you have any queries about this product then please contact Lloytron Customer Services online at:



www.lloytronhelpdesk.com

To find out more about Lloytron products, visit www.lloytron.com



Distributed in UK by Lloytron Ltd, Laltex House, Leigh, England WN7 3XH
Distributed in Europe by Laltex Ireland Ltd, Dublin 2, D02 AY86